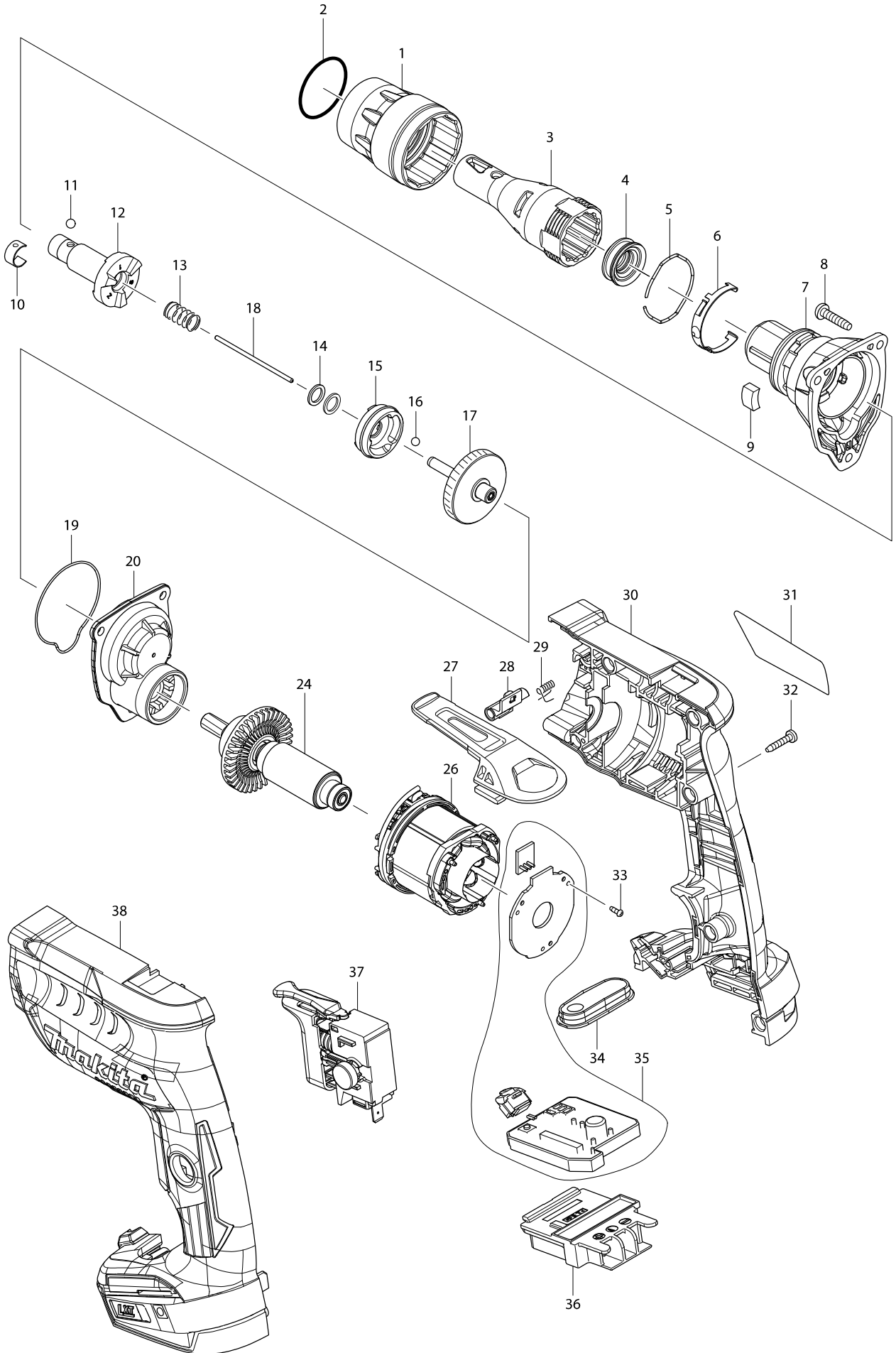


Numéro du modèle DFS452 CORDLESS SCREWDRIVER



Numéro du modèle DFS452 CORDLESS SCREWDRIVER

Position	Référence pièce	Description	Echelle	QTE	N/O	Option 1	Option 2	COMMENTAIRE
001	455591-0	LOCK RING		1				
002	424235-3	RONDELLE 30		1		P1		
003	158875-2	POSITIONNEUR COMPLET		1		P8		
004	424665-8	DUST SEAL SLEEVE		1				
005	234348-0	RING SPRING 30		1				
006	232245-4	RESSORT ANNEAU		1		P5		
007	142902-5	GEAR HOUSING COMPLETE		1				
C10	213796-6	OIL SEAL 11		1				
008	265995-6	VIS 4X18		3		P1		
009	423413-2	ETANCHEITE		1		P1		
010	232050-9	RESSORT ANNEAU		1		P3		
011	216001-0	BILLE ACIER 3.5		1		P1		
012	142903-3	SPINDLE 125S COMPLETE		1				
013	234121-8	RESSORT DE COMPRESSION 8		1		P1		
014	267202-3	RONDELLE PLATE 8 6823/24/25		2		P1		
015	223181-5	CLUTCH CAM 125S		1				
016	216008-6	BILLE ACIER 4.0		3		P1		
017	142904-1	GEAR COMPLETE		1				
C10	424663-2	SEAL		1				
018	268325-0	ROD 2		1				
019	424664-0	SEAL RING		1				
020	142909-1	GEAR HOUSING COVER COMPLETE		1				
024	519355-7	ROTOR ASS'Y		1				
026	629135-4	STATOR		1				
027	162272-6	CROCHET		1		P3		
028	142908-3	LEVER COMPLETE		1				
029	233619-2	TORSION SPRING 3		1				
030	187993-9	HOUSING SET		1				
C10	263005-3	CHEVILLE CAOUTCHOUC 6		2		P2		
D10		INC. 38						
031	850H34-9	DFS452 NAME PLATE		1				
032	266130-9	VIS PT 3X16		7		P1		
033	266490-9	TAPPING SCREW PT 2X6		3				
034	142905-9	SWITCH PLATE COMPLETE		1				
035	620349-8	CONTROLLER		1				
036	643860-3	TERMINAL		1		P5		
037	650733-3	SWITCH C3JW-4B-2L		1				
038	187993-9	HOUSING SET		1				
C10	263005-3	CHEVILLE CAOUTCHOUC 6		2		P2		
D10		INC. 30						
039	850H36-5	DFS452 SERIAL NO. LABEL		1				
A01	266622-8	VIS M4X12		1		A1		
A02A	346317-0	CROCHET		1		A3		
A02B	346317-0	CROCHET		1		A3		
A02C	346317-0	CROCHET		1		A3		
A02D	346317-0	CROCHET		1		A3		
A02E	346317-0	CROCHET		1		A3		
A02F	346317-0	CROCHET		1		A3		

Numéro du modèle DFS452 CORDLESS SCREWDRIVER

Position	Référence pièce	Description	Echelle	QTE	N/O	Option 1	Option 2	COMMENTAIRE
A02G	346449-3	CROCHET		1		P2		
A03	784261-7	DOUILLE 2-25		2		A1		
A04	784813-4	MAGNETIC BIT HOLDER 6.35-60		1				
A05B	450128-8	BATTERY COVER		1		P1		
A05C	450128-8	BATTERY COVER		1		P1		
A05D	450128-8	BATTERY COVER		1		P1		
A05E	821550-0	COFFRET MAKPAC2		1		A28		
C10	453974-8	LOQUET		4		P1		
A05F	450128-8	BATTERY COVER		1		P1		
A05G	450128-8	BATTERY COVER		1		P1		
A06B	***DC18RC	DC18RC FAST CHARGER		1				
A06C	***DC18RC	DC18RC FAST CHARGER		1				
A06D	***DC18RC	DC18RC FAST CHARGER		1				
A06E	837805-3	MOULAGE MAKPAC BFS441		1		A13		
A06F	***DC18RC	DC18RC FAST CHARGER		1				
A06G	***DC18RC	DC18RC FAST CHARGER		1				
A07B	194204-5	ACCU LI-ION BL1830 18V/3.0AH		2	*			
A07C	194204-5	ACCU LI-ION BL1830 18V/3.0AH		2	*			
A07D	196399-0	BATTERIE BL1840 SET 18V 4A		2	*	A78		
A07E	805F24-5	DFS452ZJ INDICATION LABEL		1				
A07F	196399-0	BATTERIE BL1840 SET 18V 4A		2	*	A78		
A07-1B	194204-5	ACCU LI-ION BL1830 18V/3.0AH	O	2				
A07-1C	194204-5	ACCU LI-ION BL1830 18V/3.0AH	O	2				
A07-1D	196399-0	BATTERIE BL1840 SET 18V 4A	O	2		A78		
A07-1F	196399-0	BATTERIE BL1840 SET 18V 4A	O	2		A78		
A07-1G	196460-3	BATTERY BL1820 SET		2				
A08B	821645-9	PLASTIC CARRYING CASE		1				
C10	162315-4	CLIP COFFRET		2		A3		
C20	452137-3	POIGNÉE		1		P1		
A08C	821550-0	COFFRET MAKPAC2		1		A28		
C10	453974-8	LOQUET		4		P1		
A08D	821550-0	COFFRET MAKPAC2		1		A28		
C10	453974-8	LOQUET		4		P1		
A08E	805F25-3	DFS452ZJ PLASTIC CASE LABEL		2				
A08F	821645-9	PLASTIC CARRYING CASE		1				
C10	162315-4	CLIP COFFRET		2		A3		
C20	452137-3	POIGNÉE		1		P1		
A08G	821550-0	COFFRET MAKPAC2		1		A28		
C10	453974-8	LOQUET		4		P1		
A09C	837805-3	MOULAGE MAKPAC BFS441		1		A13		
A09D	837805-3	MOULAGE MAKPAC BFS441		1		A13		
A09G	837805-3	MOULAGE MAKPAC BFS441		1		A13		
A10C	805F20-3	DFS452RFJ INDICATION LABEL		1				
A10D	805F22-9	DFS452RMJ INDICATION LABEL		1				
A10G	807M03-1	DFS452RAJ INDICATION LABEL		1				
A11C	805F21-1	DFS452RFJ PLASTIC CASE LABEL		2				
A11D	805F23-7	DFS452RMJ PLASTIC CASE LABEL		2				
A11G	807M04-9	DFS452RAJ PLASTIC CASE LABEL		2				