

**F12114L**

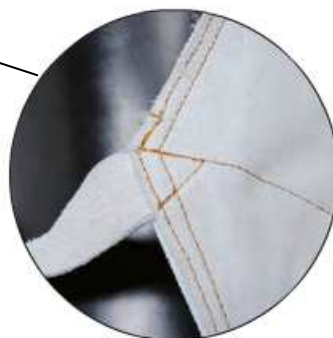
**GREMBIULE KROZ-12 60x90 RINFORZATO CON ANIMA DI ALLUMINIO.**

*APRON KROZ-12 60x90 APRON WITH ALUMINUM INSIDE*



**■ ■ ■** Grambiule in pelle crosta con ampio rinforzo cucito all'interno, dove internamente è posta una anima in foglio di alluminio riflettente, lacci in pelle con ganci automatici, cuciture in filato Kevlar®.

**■ ■ ■** Crust leather apron with large reinforcement and a core aluminium reflective foil inside, leather laces with automatic hooks, all the stitching yarn are in Kevlar®.



## Dati tecnici Technical date

<b>Norma di rif.:</b>	<b>EN ISO 11611:07</b>
<b>Materiale:</b> <i>Materials:</i>	<p>Crosta di pelle bovino, cuciture in KEVLAR®. per le chiusure e rinforzi, lamina alluminio cucita internamente          KEVLAR® e un marchio registrato DuPont™</p> <p><i>Cow split leather, KEVLAR® stitching. for closures and reinforcements, , aluminum reflective foil inside          KEVLAR® is a registered trademark of DuPont™</i></p>
<b>Spessore :</b> <i>Thickness:</i>	<b>1,3 / 1,5 mm</b>
<b>Cuciture:</b> <i>Stitching yarn:</i>	KEVLAR®
<b>Lunghezza :</b> <i>Length:</i>	<b>F12114L = 90 cm</b>
<b>Larghezza:</b> <i>Width:</i>	<b>F12114L = 60 cm</b>
<b>Etichetta 60x40 mm:</b> <i>Label 60x40 mm:</i>	 <p>The image shows a technical label for F12114L. It includes the text 'F12114L' at the top, 'EN ISO 11611:2007' below it, and a shield-shaped logo with a stylized 'F'. To the right is an icon of an open book with an 'i' inside, and a human figure with '111-123' on the chest and '175 - 182' on the side. At the bottom left, it says 'CLASSE 2 + A1' with two small icons. At the bottom center, it says 'Taglia-Size L'. At the bottom right, there is a circular logo with a lightning bolt and a 'CE' mark.</p>
<b>Materiale etichetta :</b> <i>Label material :</i>	<b>Nylon</b> <i>Nylon</i>
<b>Posizione etichetta:</b> <i>Label position:</i>	 <p>The image shows a white apron laid flat on a wooden surface. A small label is visible on the apron. An arrow points from a text box to the back of the apron, indicating the location of the 'MADE IN' label. A second image shows a close-up of a white label with the text 'MADE IN CHINA' printed on it.</p> <p style="text-align: right;">Position of label        "MADE IN" behind        the item label</p>