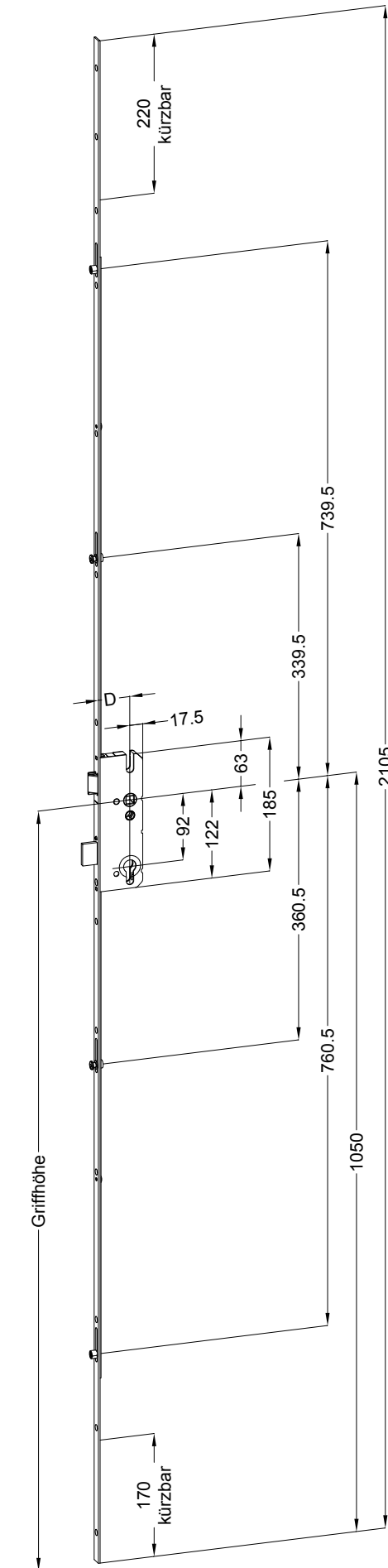


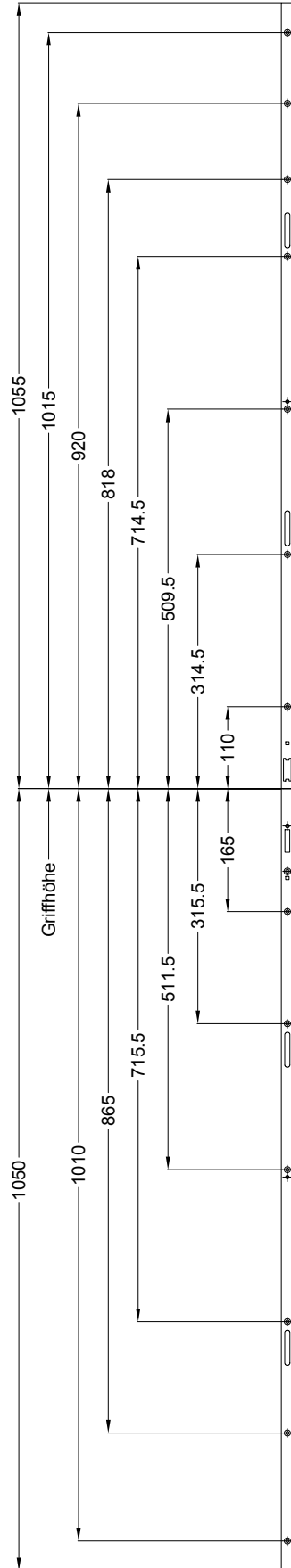
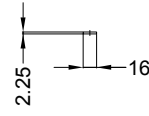
Perspektive

Schloss: STV-F1660 .../D 92/... RT4

HINWEIS: Rastexzenterpositionen sind in geschlossenem Zustand dargestellt.
Der Hub des Rastexzenter beträgt 20 mm.

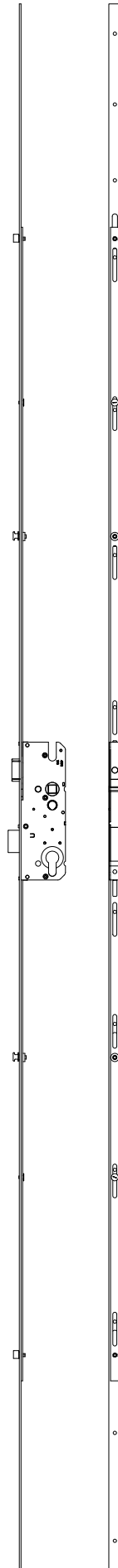


Schraublage
Schloss: STV-F1660 .../D 92/... RT4



Ansichten

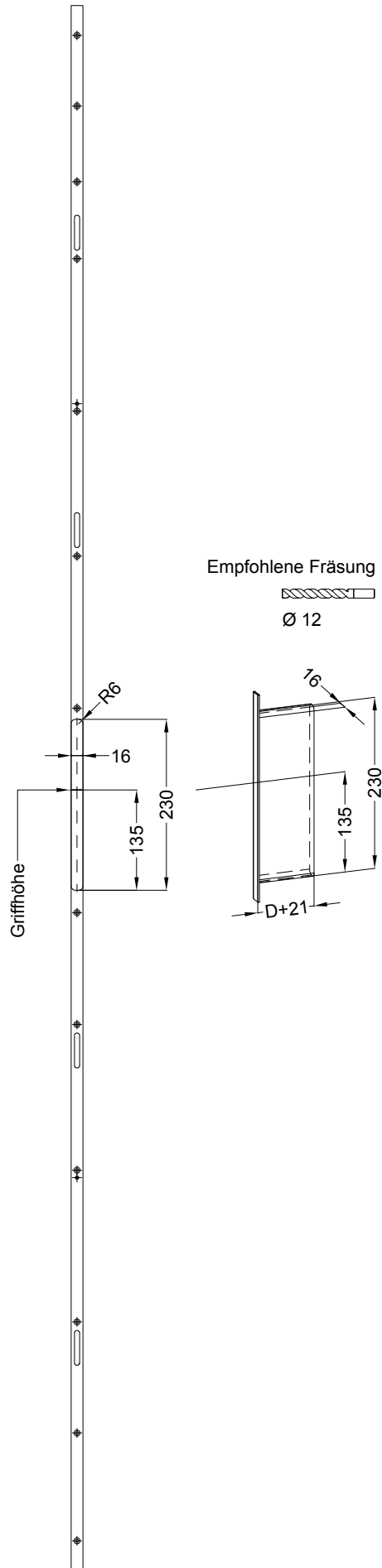
Schloss: STV-F1660 .../D 92/... RT4



Technische Änderungen vorbehalten!

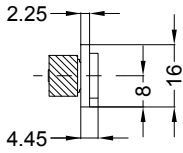
Fräsmaße

Schloss: STV-F1660 .../D 92/... RT4

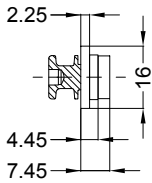


Allgemeine Vermaung

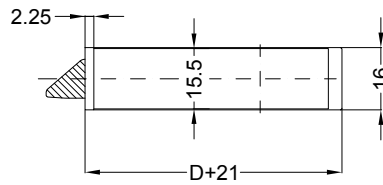
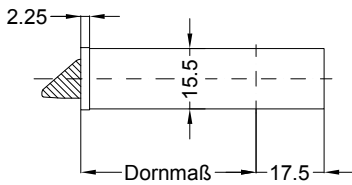
Frsmae



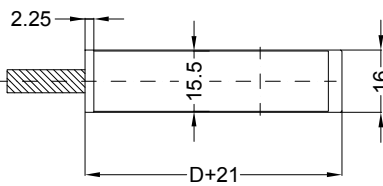
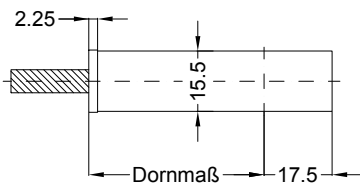
Situation
 Exzenterbolzen



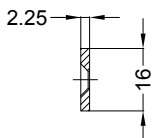
Situation
 Exzenterbolzen WK



Situation
 Falle



Situation
 Riegel



Lage
 Schloss

Katalogdarstellung

Schloss: STV-F1660 .../D 92/... RT4



Technische Änderungen vorbehalten!

