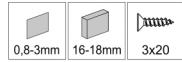
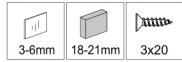
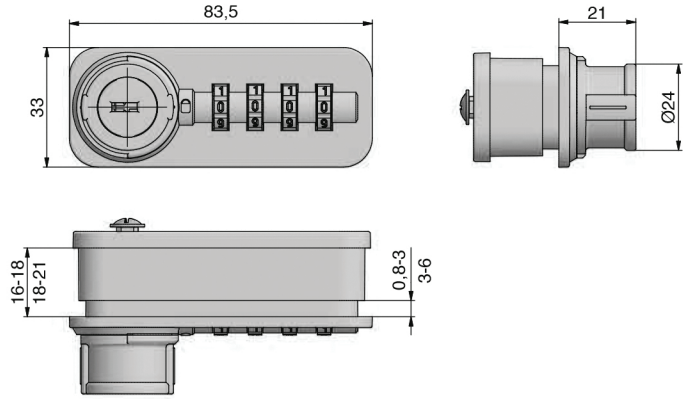


Dial Lock 58.01

Freecode



Lock for Cam  
Schloss für Riegel



A1XB58.01C



A2XB58.01C



A3XB58.01C

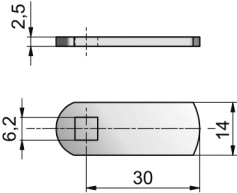


Order-No. / Bestell-Nr.	Order-No. / Bestell-Nr.	Finish / Oberfläche	BQ / VE
<b>365813200211X</b>	<b>365812200211X</b>	black / schwarz	50
<b>365813200212X</b>	<b>365812200212X</b>	black / schwarz	50
<b>365813200213X</b>	<b>365812200213X</b>	black / schwarz	50

X = 1 - 5 available systems / verfügbare Anlagen Z0001 - Z0005 see page 9 / siehe Seite 9

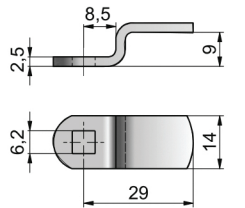
System components  
Systembauteile

Cam 477  
Riegel 477



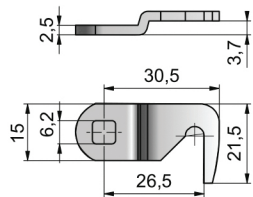
Order-No. / Bestell-Nr.	Finish / Oberfläche	BQ / VE
<b>443714770</b>	nickel plated / vernickelt	50

Cam 460  
Riegel 460



Order-No. / Bestell-Nr.	Finish / Oberfläche	BQ / VE
<b>443714600</b>	nickel plated / vernickelt	50

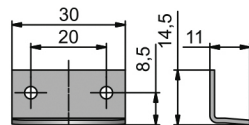
Cam 2-027  
Riegel 2-027



Order-No. / Bestell-Nr.	Finish / Oberfläche	BQ / VE
<b>448270027</b>	nickel plated / vernickelt	50



Striker plate 3011  
Anschlagwinkel 3011



Order-No. / Bestell-Nr.	Finish / Oberfläche	BQ / VE
<b>443011100</b>	nickel plated / vernickelt	250