

437  **P4 00 56 F0**

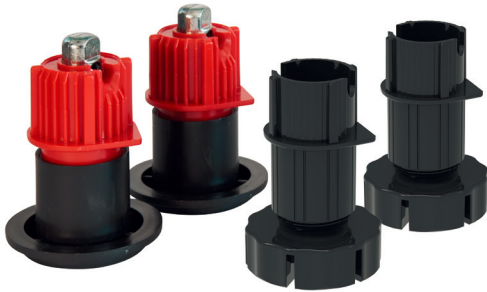
07
08
10
Hcm

OPTIONAL



**REAR
ART.437**

**FRONT
ART.456**



2 x

2 x

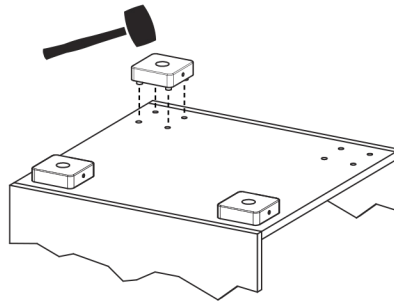
1 x



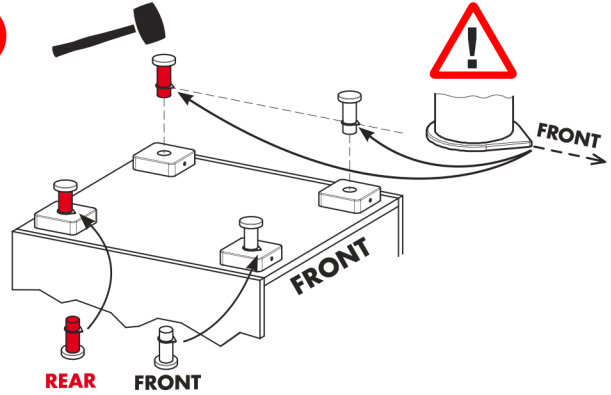
New



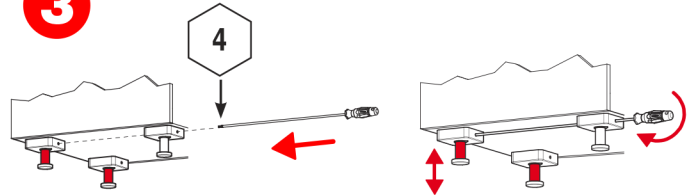
1





2



3



4

809 68 C1 04 00 
809 70 C1 04 00 



202

203

204

225

504

505

506

508

226

228

230

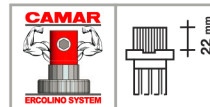
235





509-510

512

513-514

515



840 00 P2 H2 16 
840 00 P2 H2 20 
840 00 P2 H2 A6 
840 00 P2 M4 RF 
840 00 P2 M6 RF 
840 00 P2 XA RF 
840 00 P2 X3 RF 
840 00 P2 X7 RF 