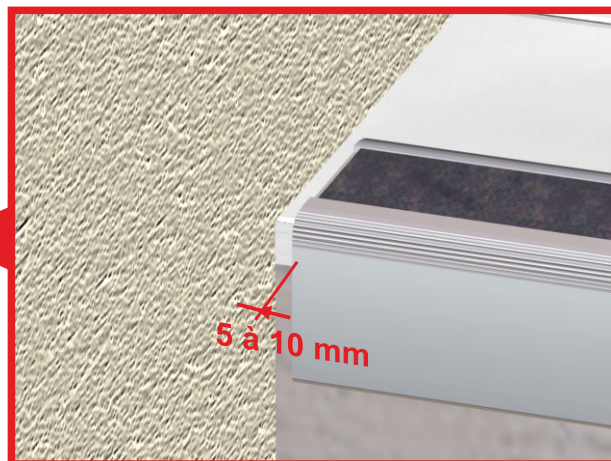
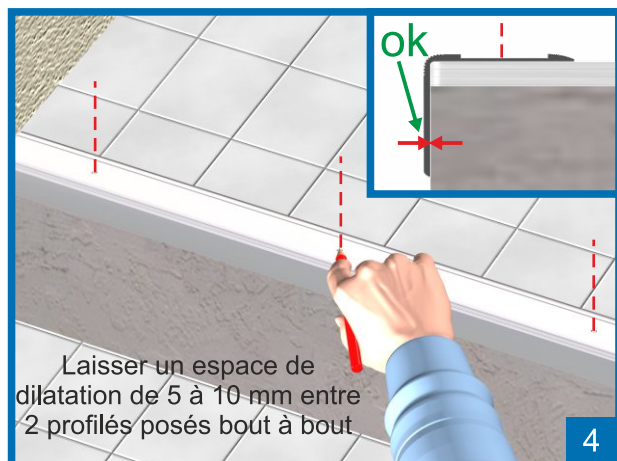
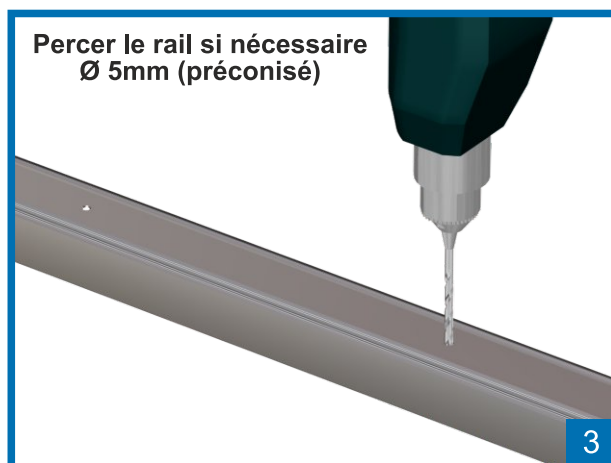
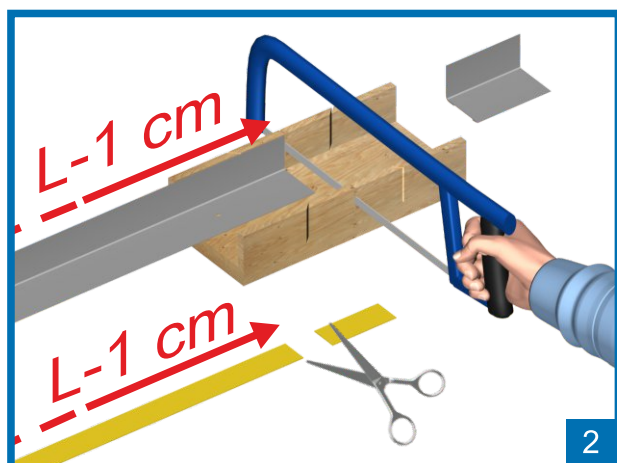
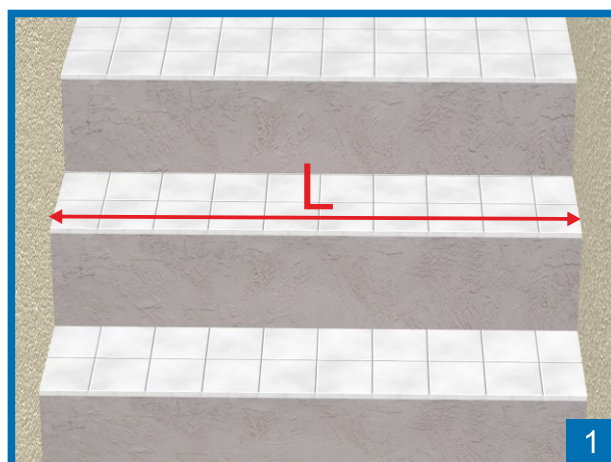


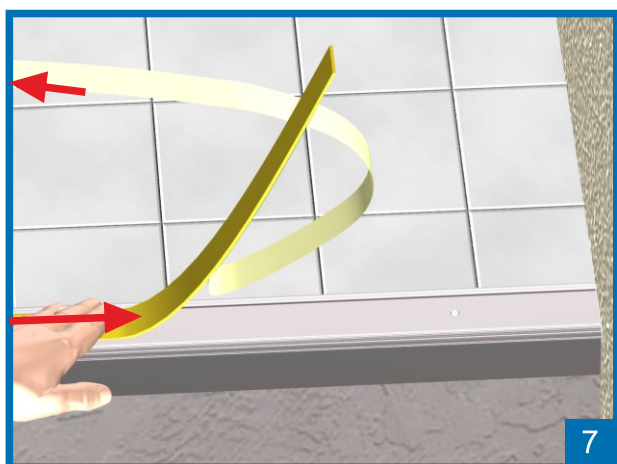
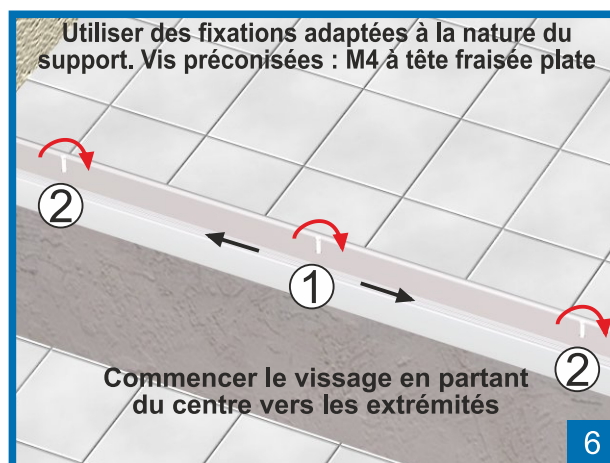


EPI



réf. 810 324	810 363
810 324/150	810 364
810 330	810 365
810 333	810 366
810 335	810 366/150
810 336	810 367
810 337	810 368
810 339	810 369
810 340	810 376
810 342	810 377
810 342/150	810 378
810 345	810 380
810 349	810 382
810 349/150	810 383
810 352	810 386
810 353	810 390
810 354	810 391
810 355	810 397
810 356	810 398
810 357	810 425
810 358	810 430
810 361	810 431
810 362	810 433





En cas de pose sur bois, il est nécessaire d'avoir un perçage au moins tous les 20 cm (pour les réf 810 354 et 810 355, ajouter des perçages)

