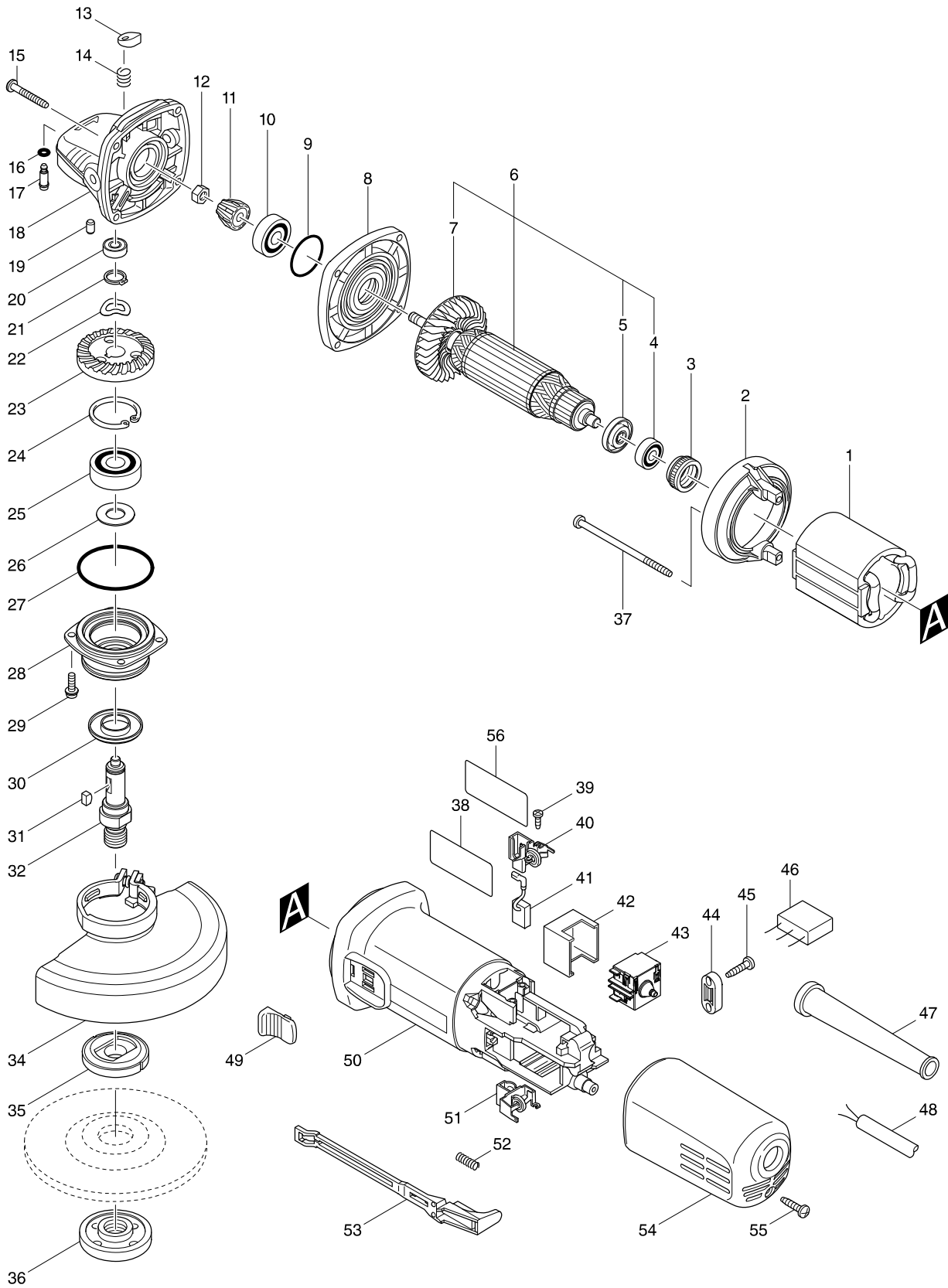


Numéro du modèle 9558HNR 125MM ANGLE GRINDER



Position	Référence pièce	Description	Echelle	QTE	N/O	Option 1	Option 2	COMMENTAIRE
001	621708-9	FIELD 220-240V		1		P19		
002	418770-1	BAFFLE PLATE		1		P1		
003	421868-5	LABYRINTH RUBBER RING 19		1		P1		
004	210034-7	BALL BEARING 607LLB		1		P3		
005	681636-0	INSULATION WASHER		1		P3		
006	515613-9	ARMATURE ASS'Y 220-240V		1		P20		
D10		INC. 4,5,7						
007	240076-7	FAN 56		1		P2		
008	317821-6	GEAR HOUSING COVER		1		P6		
009	213445-5	O-RING 26		1		P1		
010	210042-8	BALL BEARING 629LLB		1		P10		
011	227541-3	SPIRAL BEVEL GEAR 10		1				
012	252186-8	HEX. NUT M6		1		P1		
013	417771-6	PIN CAP		1		P1		
014	233376-2	COMPRESSION SPRING 8		1		P1		
015	266050-7	TAPPING SCREW 4X30		4		P2		
016	213960-9	O RING 5		1		P1		
017	256546-6	SHOULDER PIN 4		1				
018	318941-9	GEAR HOUSING		1				
019	263002-9	RUBBER PIN 4		1		P1		
020	210033-9	BALL BEARING 696ZZ		1		P2		
021	961052-5	RETAINING RING S-12		1		P2		
022	267794-2	WAVE WASHER 12		1		P1		
023	227542-1	SPIRAL BEVEL GEAR 37		1				
024	962151-6	RETAINING RING R-32		1		P6		
025	211129-9	BALL BEARING 6201DDW		1		P19		
026	267238-2	FLAT WASHER 12		1		P1		
027	213622-9	O RING 45		1		P1		
028	318331-6	BEARING BOX		1				
029	265099-4	PAN HEAD SCREW M4X14		4		P1		
030	345464-4	LABYRINTH RING		1		P1		
031	254011-9	WOODRUFF KEY 4		1		P7		
032	324489-1	SPINDLE		1		P5		
034	123099-9	WHEEL COVER 125AK ASSEMBLY		1		P11		
C10	213009-5	O RING 4		1		P1		
C20	265180-1	PAN HEAD SCREW M5X16		1		P1		
035	224415-9	INNER FLANGE 42		1		P4		
036	224554-5	LOCK NUT 14-45		1		P15		
037	266623-6	+BIND TAPPING SCREW 4X80		2				
038	851T06-9	9558HNR NAME PLATE		1				
039	266007-8	TAPPING SCREW BIND PT 3X10		4		P1		
040	643760-7	BRUSH HOLDER		1		P8		
041	194074-2	CARBON BRUSH CB-325		1		P4		
042	418729-8	SPACER		1		P1		
043	650769-2	SWITCH		1				
044	687124-5	STRAIN RELIEF		1		P1		
045	265995-6	TAPPING SCREW 4X18		2		P1		
046	638740-6	CAPACITOR UNIT		1				

