

**Recommandation**

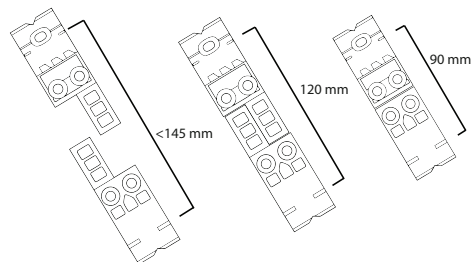
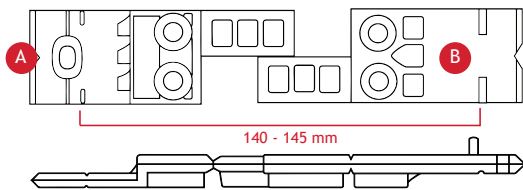
Ajuster manuellement l'espacement entre vos lames.

Si vous utilisez:

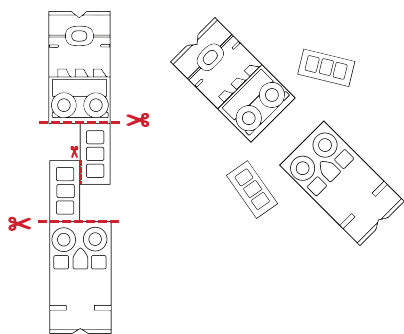
Du bois séché au séchoir - 18% humidité = min. 5 - 6 mm

Du bois sec à l'air - 18% humidité = max. 4 - 5 mm

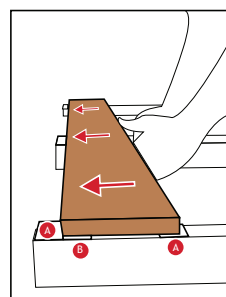
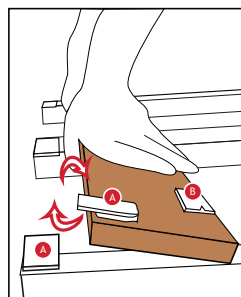
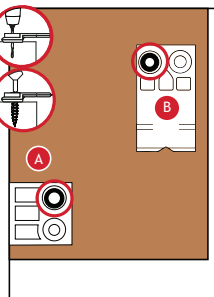
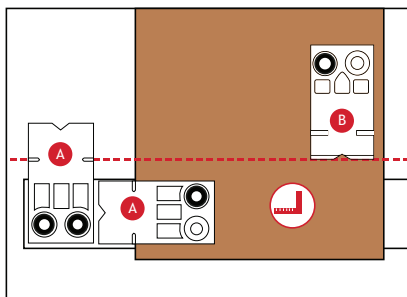
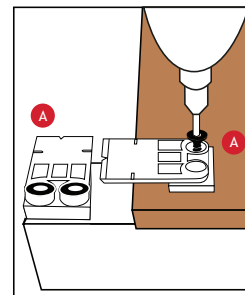
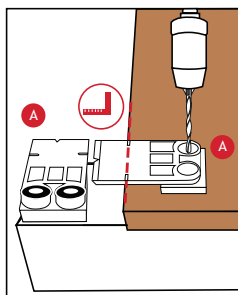
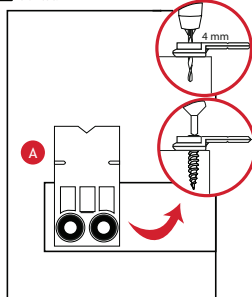
**Attention:** Ne convient pas pour bois composite.



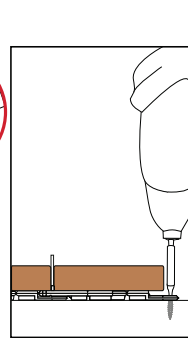
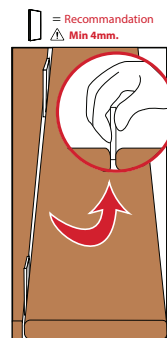
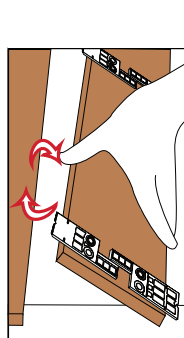
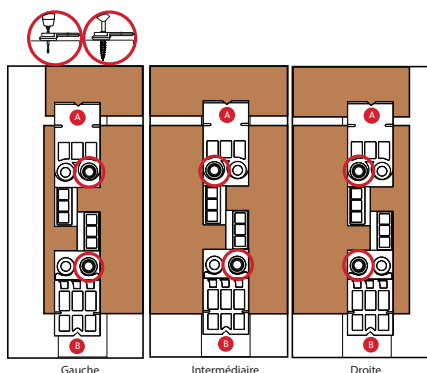
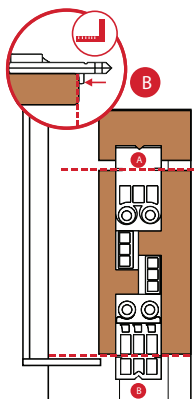
**LAME PREMIÈRE**



⚠ Pre-perçage indispensable  
Diamètre: 4 mm



**LAME INTERMÉDIAIRE**



⚠ = Recommandation  
Min 4mm.

**LAME DERNIÈRE**

