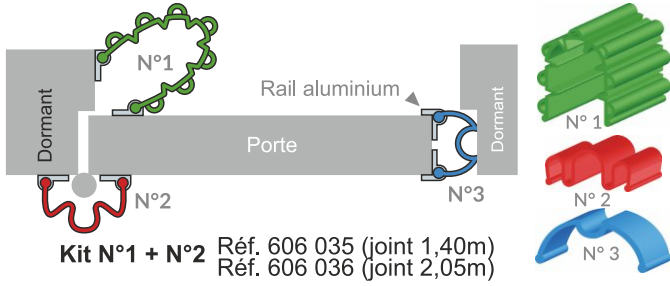
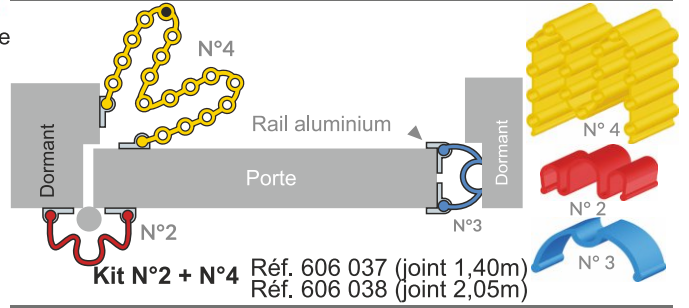


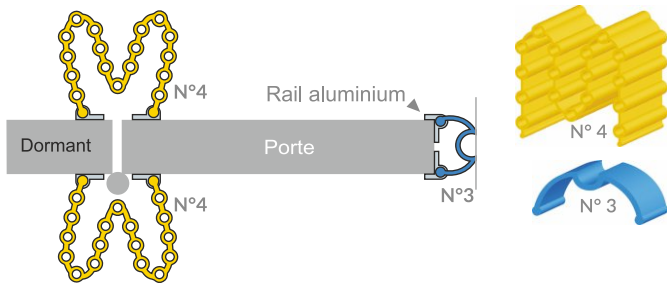
Porte ouverture à 90°



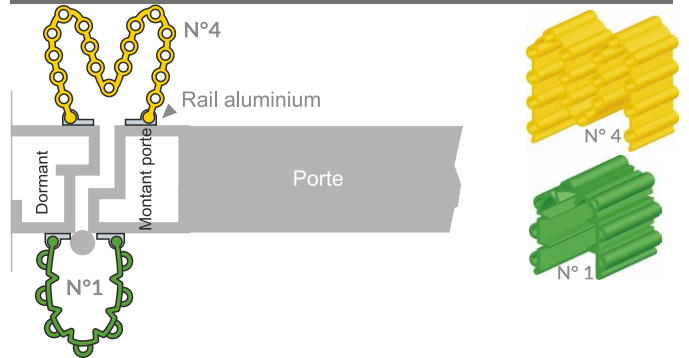
Porte ouverture à 180°



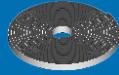
Porte double effet : ouverture à 180°



Porte : ouverture à 90° ou 180°



Pose par adhésif

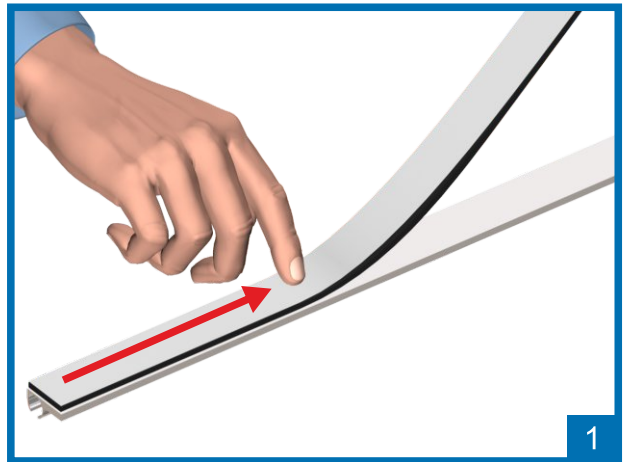


OU

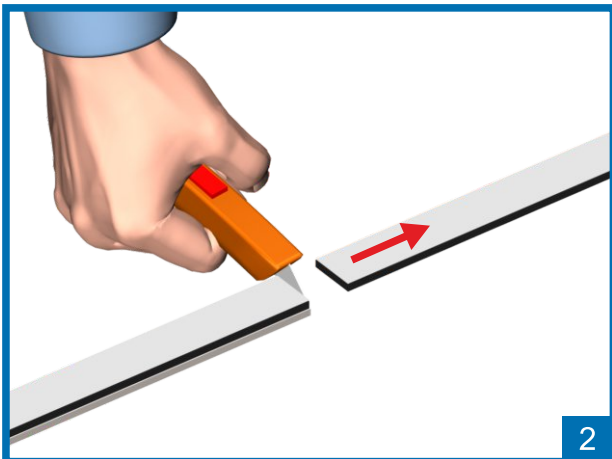
Pose par vis



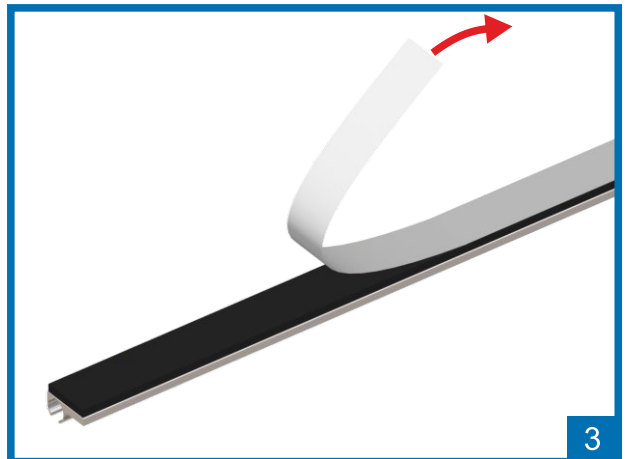
Pose par adhésif



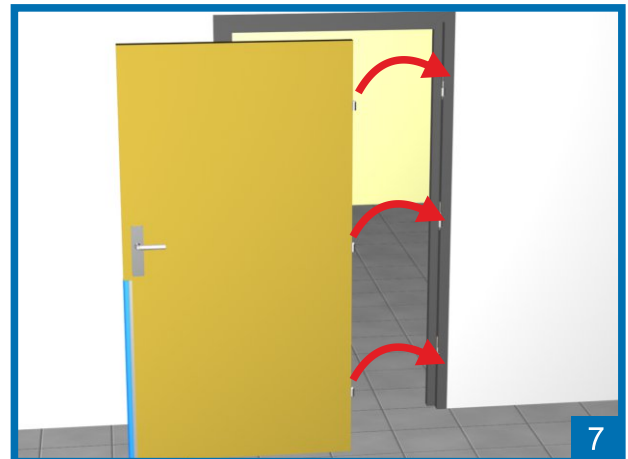
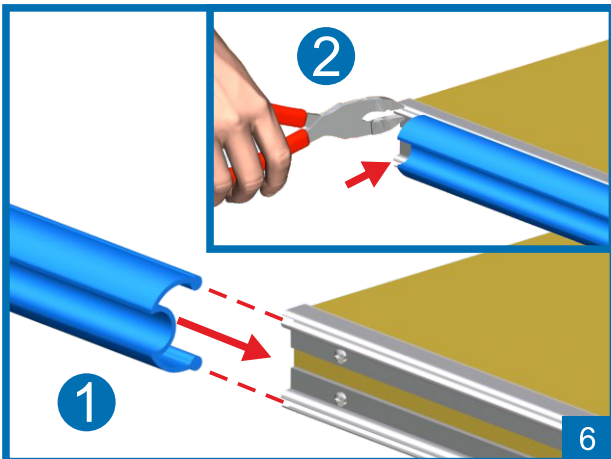
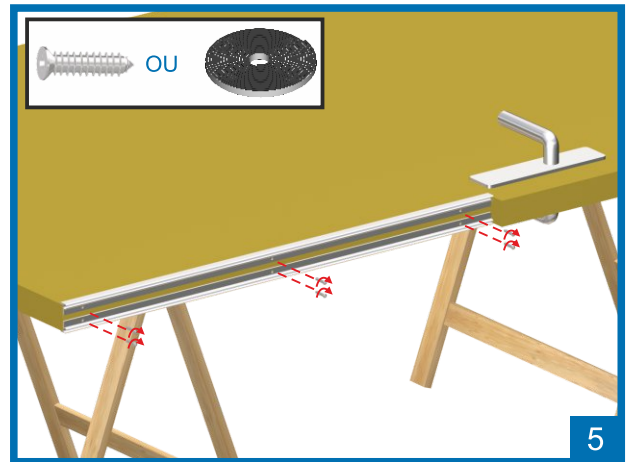
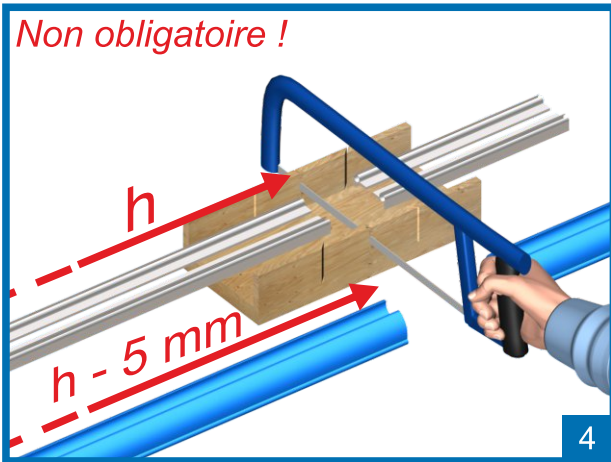
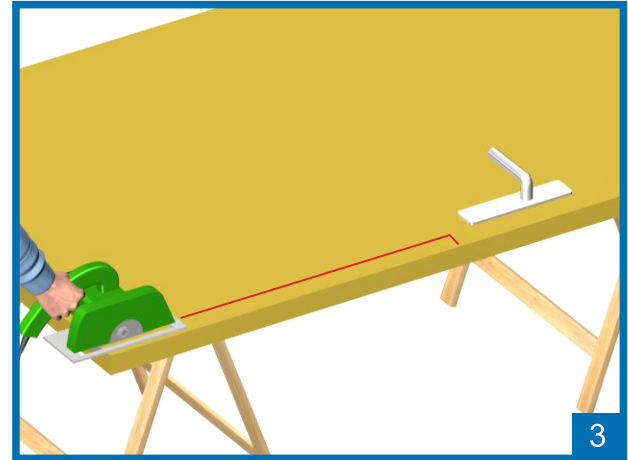
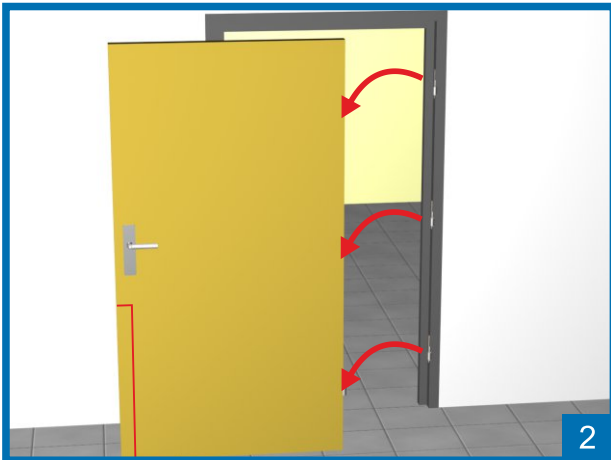
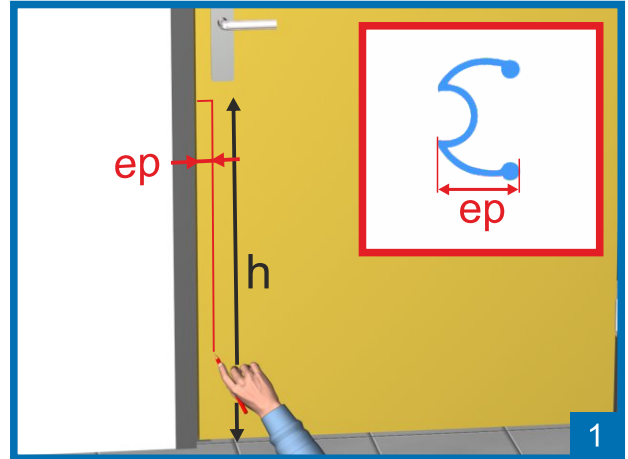
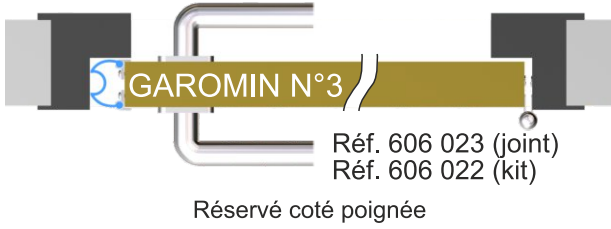
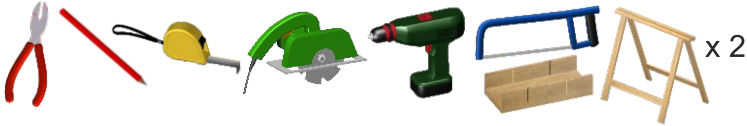
1

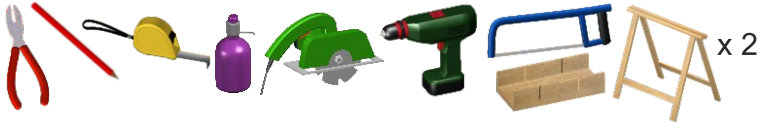


2



3





GAROMIN N°2

- Réf. 606 004 (joint 1,40m)
- Réf. 606 003 (joint 2,05m)
- Réf. 606 001 (kit 1,40m)
- Réf. 606 002 (kit 2,05m)

Réservé coté paumelle, gond

