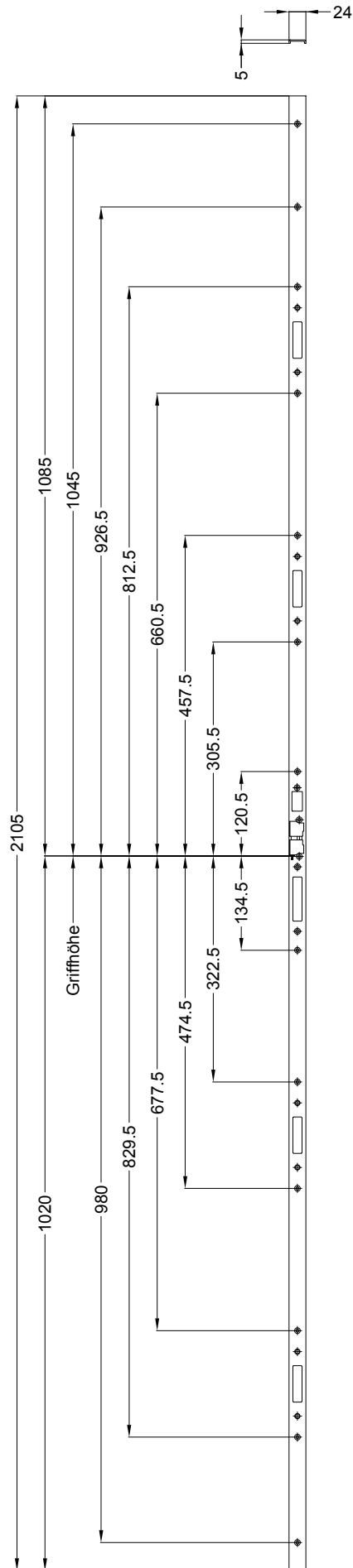


Schraublage
Rahmenteile:

STV-SL U2403 AVU FAB1 SKG UMV4 RS
DIN LS spiegelbildlich

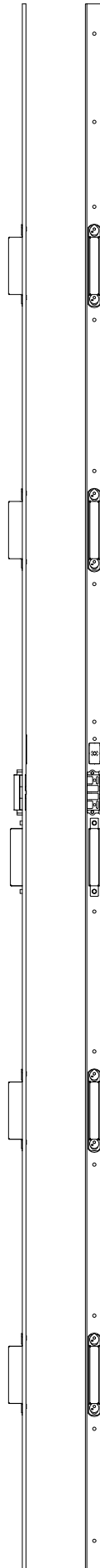


Technische Änderungen vorbehalten!

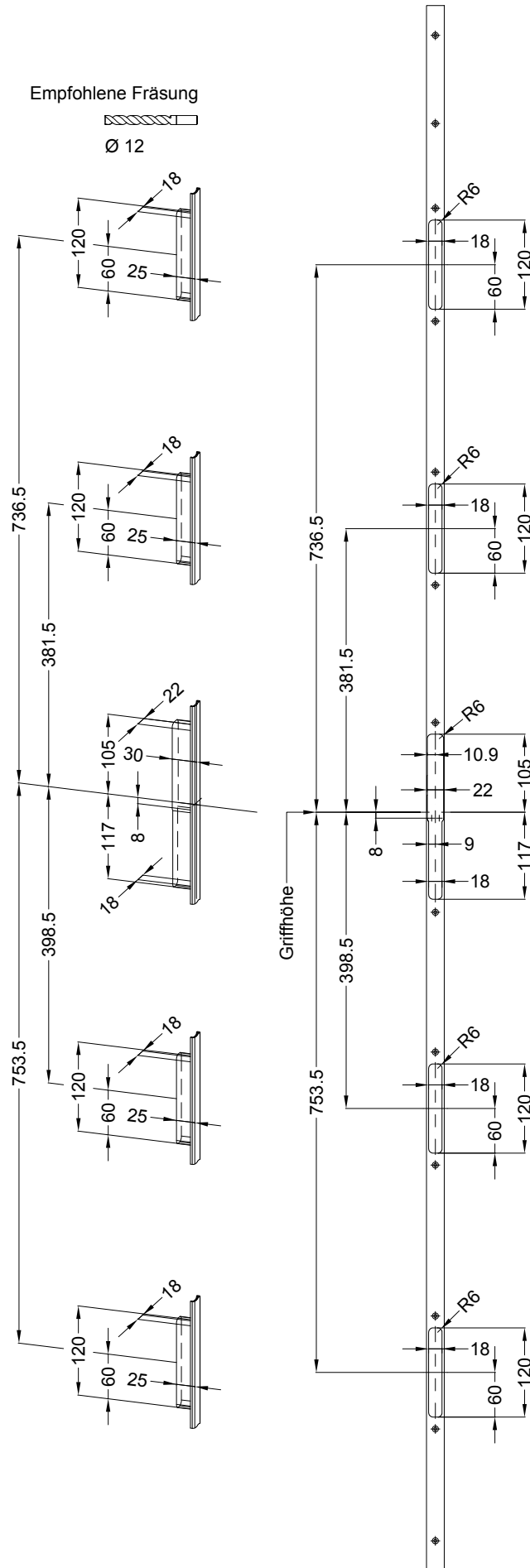


Ansichten
Rahmenteile:

STV-SL U2403 AVU FAB1 SKG UMV4 RS
DIN LS spiegelbildlich



Technische Änderungen vorbehalten!



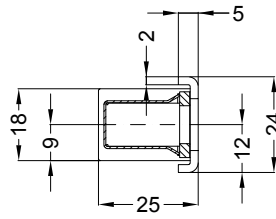
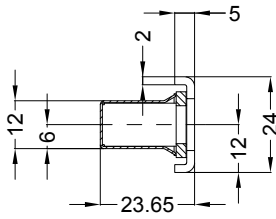
Einbausituationen der Bauteile mit Fräsmaßen

Rahmenteile: STV-SL U2403 AVU FAB1 SKG UMV4 RS
DIN LS spiegelbildlich

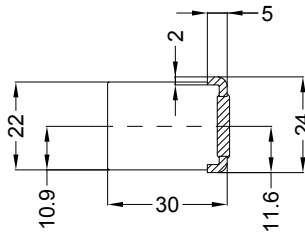
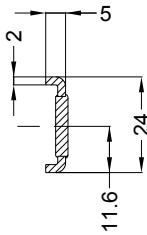


Allgemeine Vermaßung

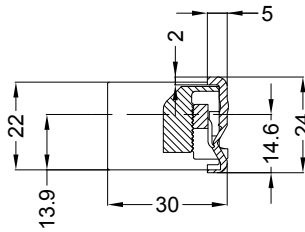
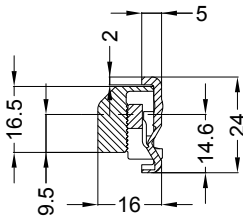
Fräsmaße



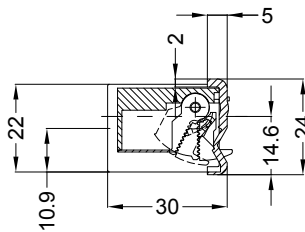
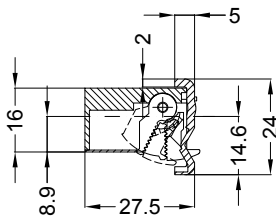
Situation
Schwenkriegel



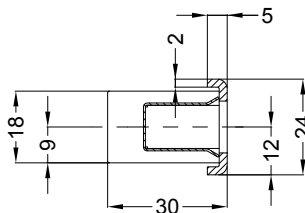
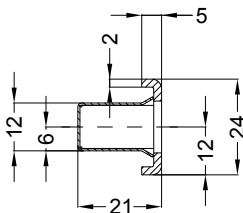
Situation
Abdeckkappe



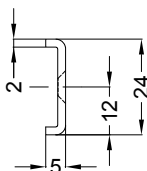
Situation Falle
mit ESW 9/91,4 FA



Situation E-Öffner
1 mm abgelassen



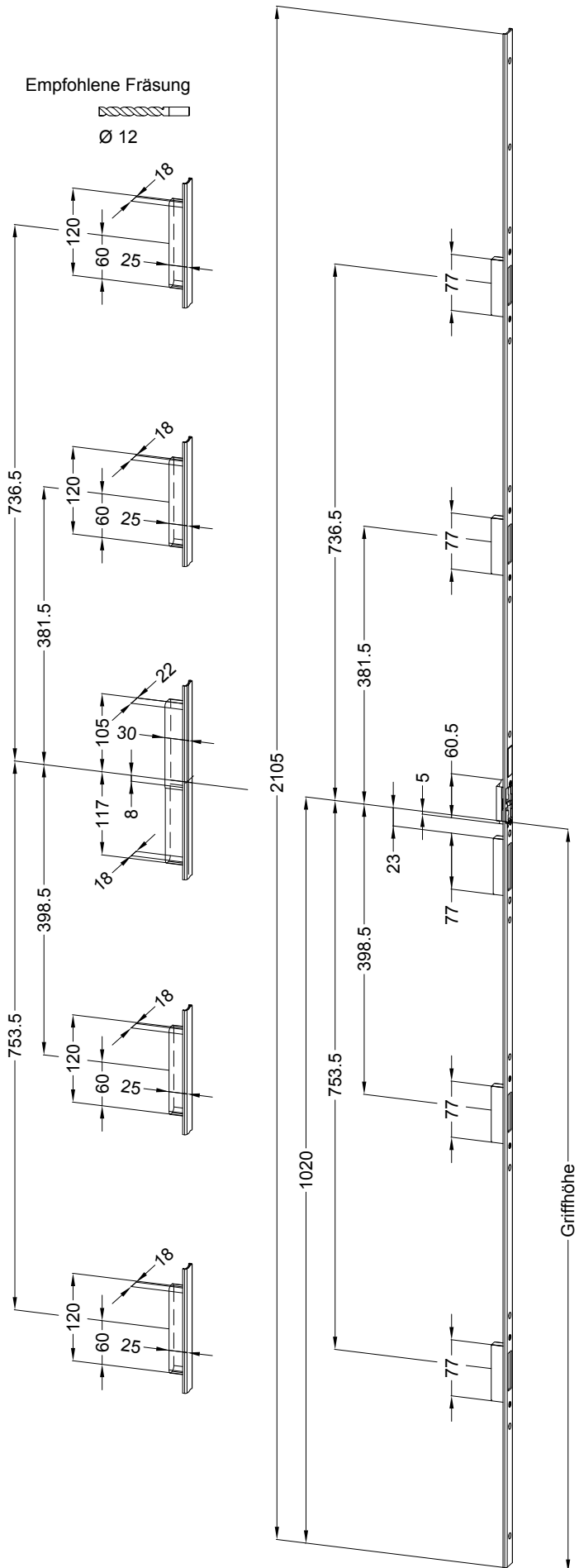
Situation
Riegel



Lage
Schließleiste

Katalogdarstellung

Rahmenteile: STV-SL U2403 AVU FAB1 SKG UMV4 RS
DIN LS spiegelbildlich



Technische Änderungen vorbehalten!