



LINK



PATENTED

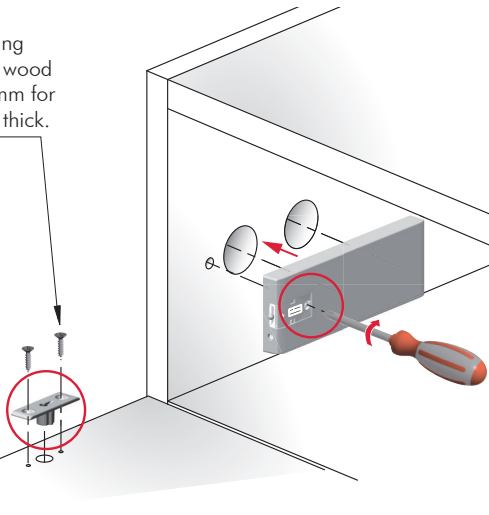


INSTALLATION

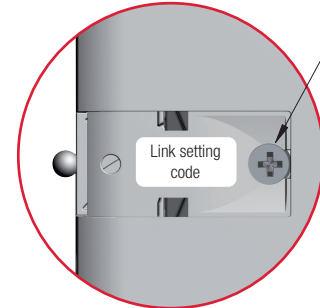


The door bracket has to be placed with the narrow part of the drop-shaped slot facing the cabinet.

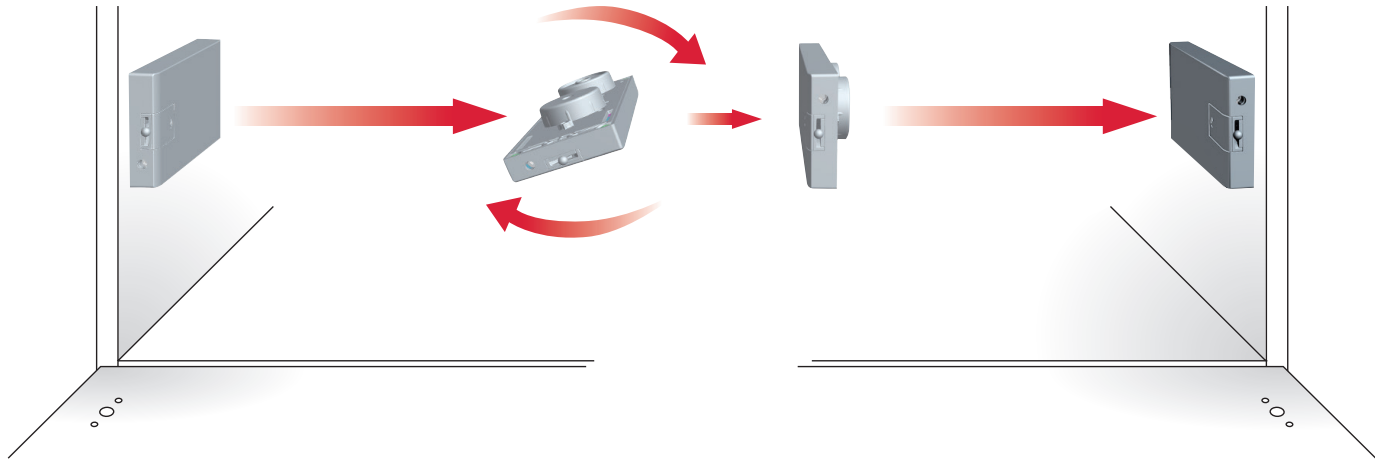
Recommended fixing countersunk head wood screws $\varnothing 4 \times 18$ mm for door 18 mm min. thick.



Pre-inserted screw $\varnothing 3,5 \times 16$ mm - PZ2.

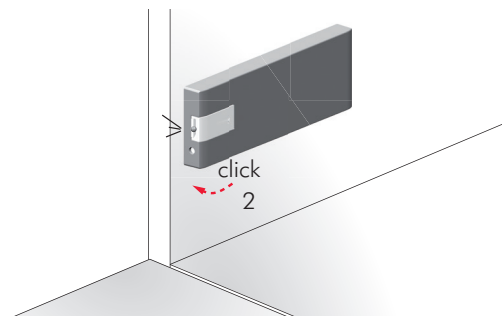
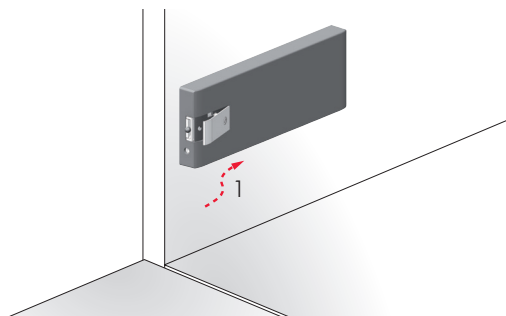


UNHANDED MECHANISM

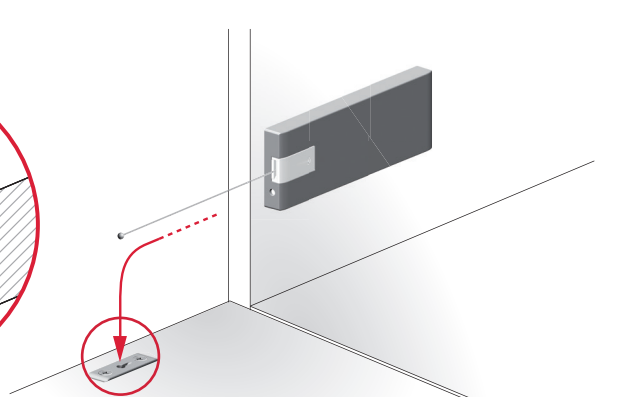
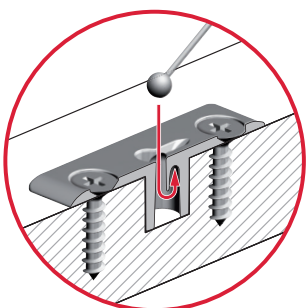


8

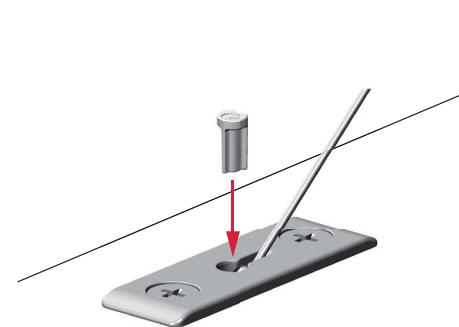
COVER CAP INSERTION



METAL WIRE INSERTION ONTO THE DOOR BRACKET

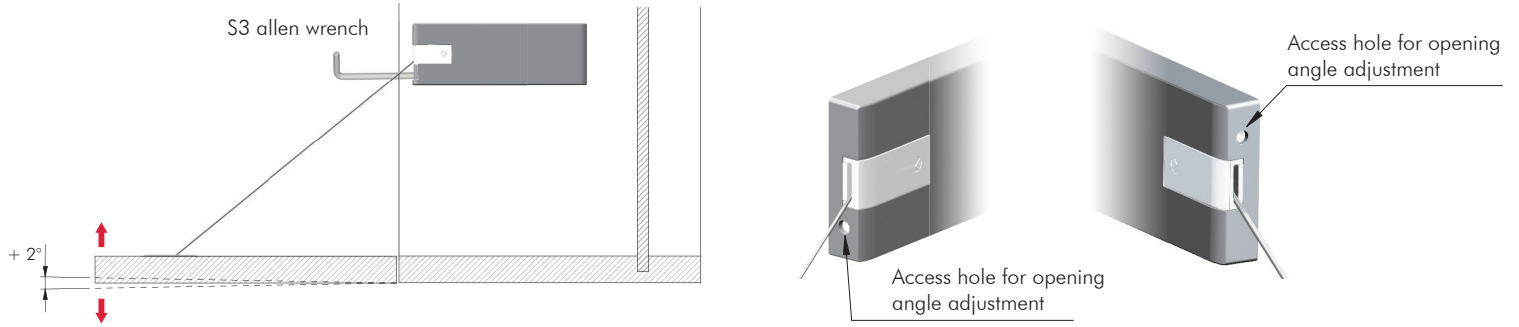


PLASTIC WIRE LOCKING

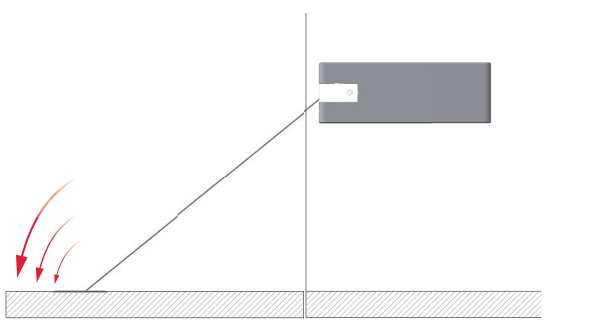




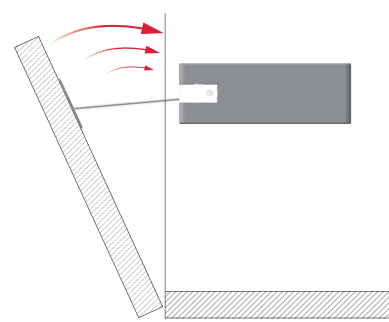
ADJUSTMENT



SOFT OPENING

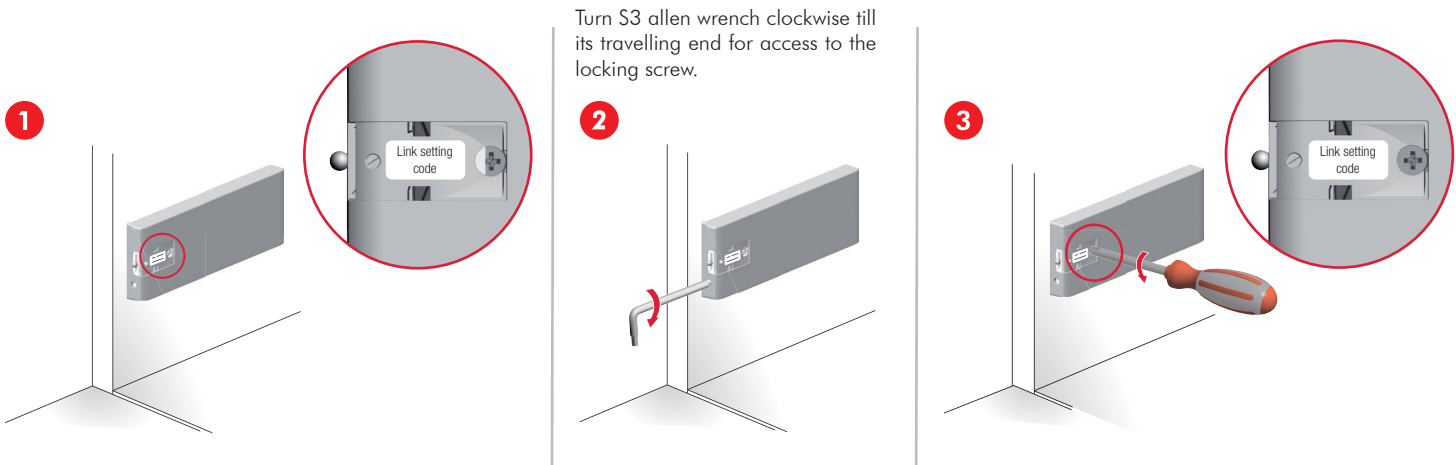


SMOOTH CLOSING



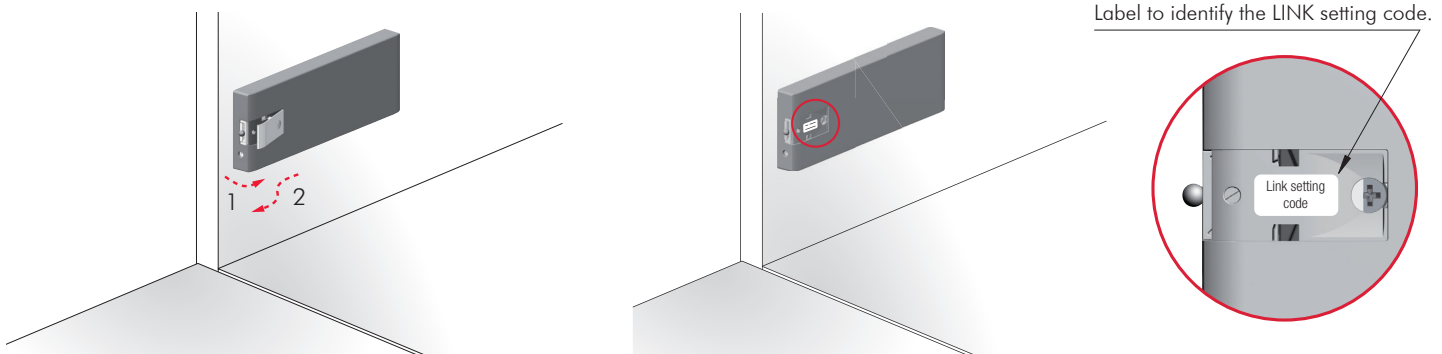
Soft opening and smooth closing are guaranteed only when opening and closing cycles are fully carried out.

LINK REMOVAL



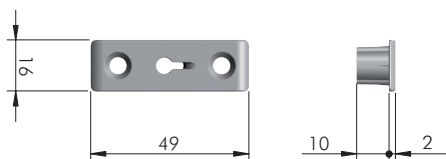
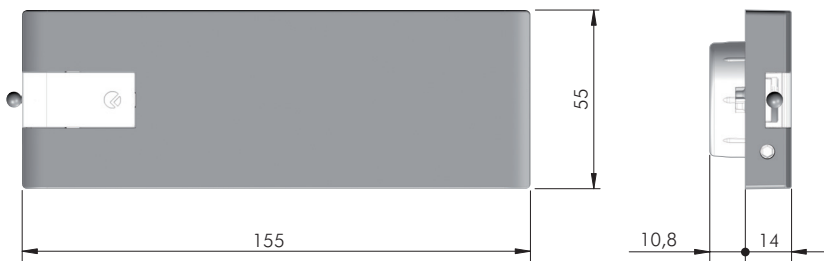
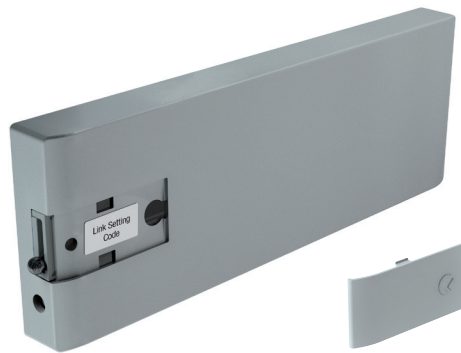
8

LINK SETTINGS IDENTIFICATION





OPENING SYSTEMS FOR LIFT UP AND DROP DOWN DOORS



ZA		EP		ST		+		= 12 pcs.	
47005020UZ	AE	JL	FU				A262		
47020020UZ	AE	JL	FU				N262		
47030020UZ	AE	JL	FU				U262		
47035020UZ	AE	JL	FU				AL280		
47038020UZ	AE	JL	FU				AQ300		
47040020UZ	AE	JL	FU				AQ335		

NOTE: LINK is supplied in carton box including 1 piece, door bracket nickel-plated, countersunk fixing screws Ø 4 x 18 mm nickel-plated, cover cap and fitting guide.

8

= White

= Aluminium PE11

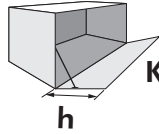
= T-met

= Gunmetal



= Nickel-plated

OPENING SYSTEMS FOR LIFT UP AND DROP DOWN DOORS



Kg = Door weight including the possible handle.

Rev. 02

Kg	Link	h																			
		250		275		300		325		350		375		400		425		450		480	
1,75	x2	-	-	-	-	-	-	-	-	-	-	-	-	-	-	A262	A262	A262	A262	A262	A262
	x1	A262		N262		N262		N262		N262		N262		U262		U262					
2,00	x2	-	-	-	-	-	-	-	-	A262	A262	A262	A262	A262	A262	A262	A262	A262	N262	A262	N262
	x1	N262		N262		N262		N262		U262		U262								AL280	
2,25	x2	-	-	-	-	-	-	A262	A262	A262	A262	A262	A262	A262	N262	A262	N262	A262	N262	A262	U262
	x1	N262		N262		U262		U262												AL280	
2,50	x2	-	-	A262	A262	A262	A262	A262	A262	A262	A262	A262	N262	A262	N262	A262	U262	A262	U262	A262	U262
	x1	N262		U262		U262														AL280	
2,75	x2	-	-	A262	A262	A262	A262	A262	N262	A262	N262	A262	N262	A262	U262	A262	U262	A262	U262	N262	U262
	x1	U262		U262														AL280		AL280	
3,00	x2	A262	A262	A262	A262	A262	N262	A262	N262	A262	N262	A262	U262	A262	U262	N262	U262	N262	U262	U262	U262
	x1	U262								AL280		AL280		AL280		AQ300		AQ300		AQ300	
3,25	x2	A262	A262	A262	N262	A262	N262	A262	N262	A262	U262	A262	U262	N262	U262	N262	U262	U262	U262	U262	U262
	x1							AL280		AL280		AL280		AQ300		AQ300		AQ300		AQ300	
3,50	x2	A262	A262	A262	N262	A262	N262	A262	N262	A262	U262	N262	U262	N262	U262	U262	U262	U262	U262	N262	AL280
	x1							AL280		AL280		AQ300		AQ300		AQ300		AQ300		AQ300	
3,75	x2	A262	N262	A262	N262	A262	U262	A262	U262	N262	U262	N262	U262	U262	U262	U262	U262	N262	AL280	U262	AL280
	x1					AL280		AL280		AQ300		AQ300		AQ300		AQ300		AQ335		AQ335	
4,00	x2	A262	N262	A262	U262	A262	U262	N262	U262	N262	U262	U262	U262	U262	U262	N262	AL280	U262	AL280	U262	AL280
	x1					AL280		AL280		AQ300		AQ300		AQ335		AQ335		AQ335		AQ335	
4,25	x2	A262	N262	A262	U262	N262	U262	N262	U262	U262	U262	U262	U262	N262	AL280	U262	AL280	U262	AL280	U262	AL280
	x1			AL280		AQ300		AQ300		AQ300		AQ300		AQ300		AQ335		AQ335			
4,50	x2	A262	U262	A262	U262	N262	U262	U262	U262	U262	U262	N262	AL280	U262	AL280	U262	AL280	U262	AL280	AL280	AL280
	x1	AL280		AL280		AQ300		AQ300		AQ300		AQ335		AQ335		AQ335					
4,75	x2	A262	U262	N262	U262	U262	U262	U262	U262	N262	AL280	U262	AL280	U262	AL280	AL280	AL280	AL280	AL280	AL280	AL280
	x1	AL280		AQ300		AQ300		AQ300		AQ335		AQ335		AQ335							
5,00	x2	N262	U262	N262	U262	U262	U262	N262	AL280	U262	AL280	U262	AL280	U262	AL280	AL280	AL280	AL280	AL280	AL280	AL280
	x1	AL280		AQ300		AQ300		AQ335		AQ335		AQ335									
5,25	x2	N262	U262	U262	U262	U262	U262	N262	AL280	U262	AL280	U262	AL280	AL280	AL280	AL280	AL280	AL280	AL280	AL280	AQ300
	x1	AL280		AQ300		AQ300		AQ335		AQ335											
5,50	x2	N262	U262	U262	U262	N262	AL280	U262	AL280	U262	AL280	AL280	AL280	AL280	AL280	AL280	AL280	AL280	AQ300	AL280	AQ300
	x1	AL280		AQ300		AQ335		AQ335													
5,75	x2	U262	U262	U262	U262	N262	AL280	U262	AL280	U262	AL280	AL280	AL280	AL280	AL280	AL280	AQ300	AL280	AQ300	AQ300	AQ300
	x1	AQ300		AQ300		AQ335		AQ335													
6,00	x2	U262	U262	N262	AL280	U262	AL280	U262	AL280	AL280	AL280	AL280	AL280	AL280	AL280	AL280	AQ300	AL280	AQ300	AQ300	AQ300
	x1	AQ300		AQ335		AQ335															
6,25	x2	U262	U262	N262	AL280	U262	AL280	U262	AL280	AL280	AL280	AL280	AL280	AL280	AL280	AQ300	AL280	AQ300	AQ300	AQ300	AQ300
	x1	AQ300		AQ335		AQ335															
6,50	x2	N262	AL280	U262	AL280	U262	AL280	AL280	AL280	AL280	AL280	AL280	AL280	AL280	AL280	AQ300	AQ300	AQ300	AQ300	AQ300	AQ335
	x1	AQ335		AQ335																	
6,75	x2	N262	AL280	U262	AL280	U262	AL280	AL280	AL280	AL280	AL280	AL280	AL280	AL280	AL280	AQ300	AQ300	AQ300	AQ300	AQ300	AQ335
	x1	AQ335		AQ335																	
7,00	x2	U262	AL280	U262	AL280	AL280	AL280	AL280	AL280	AL280	AQ300	AL280	AQ300	AQ300	AQ300	AQ300	AQ300	AQ300	AQ335	AQ335	AQ335
	x1	AQ335		AQ335																	
7,50	x2	U262	AL280	AL280	AL280	AL280	AL280	AL280	AL280	AL280	AQ300	AQ300	AQ300	AQ300	AQ300	AQ300	AQ335	AQ335	AQ335	AQ335	AQ335
	x1	AQ335																			
8,00	x2	U262	AL280	AL280	AL280	AL280	AQ300	AQ300	AQ300	AQ300	AQ300	AQ300	AQ300	AQ300	AQ335	AQ335	AQ335	AQ335	AQ335	AQ335	-
	x1	AL280		AL280		AL280		AQ300		AQ300		AQ300		AQ300		AQ335		AQ335		AQ335	
8,25	x2	AL280	AL280	AL280	AL280	AL280	AQ300	AQ300	AQ300	AQ300	AQ300	AQ300	AQ300	AQ300	AQ335	AQ335	AQ335	AQ335	AQ335	AQ335	-
	x1	AL280		AL280		AL280		AQ300		AQ300		AQ300		AQ300		AQ335		AQ335		AQ335	
8,50	x2	AL280	AL280	AL280	AL280	AL280	AQ300	AQ300	AQ300	AQ300	AQ300	AQ300	AQ300	AQ300	AQ335	AQ335	AQ335	AQ335	-	-	-
	x1	AL280		AL280		AL280		AQ300		AQ300		AQ300		AQ300		AQ335		AQ335		AQ335	
8,75	x2	AL280	AL280	AL280	AL280	AL280	AQ300	AQ300	AQ300	AQ300	AQ300	AQ300	AQ300	AQ300	AQ335	AQ335	AQ335	AQ335	-	-	-
	x1	AL280		AL280		AL280		AQ300		AQ300		AQ300		AQ300		AQ335		AQ335		AQ335	
9,00	x2	AL280	AL280	AL280	AQ300	AL280	AQ300	AQ300	AQ300	AQ300	AQ300	AQ300	AQ300	AQ300	AQ335	AQ335	AQ335	AQ335	-	-	-
	x1	AL280		AL280		AL280		AQ300		AQ300		AQ300		AQ300		AQ335		AQ335		AQ335	

CODE SETTINGS: A262, N262, U262, AL280 *

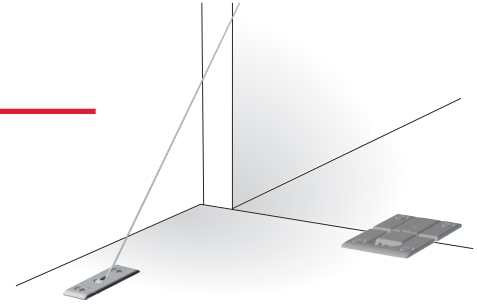
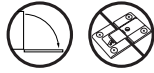
CODE SETTINGS: AL280, AQ300, AQ335

* For alternative applications with 1 mechanism LINK only, the remaining settings AQ300 – AQ335 might be required.

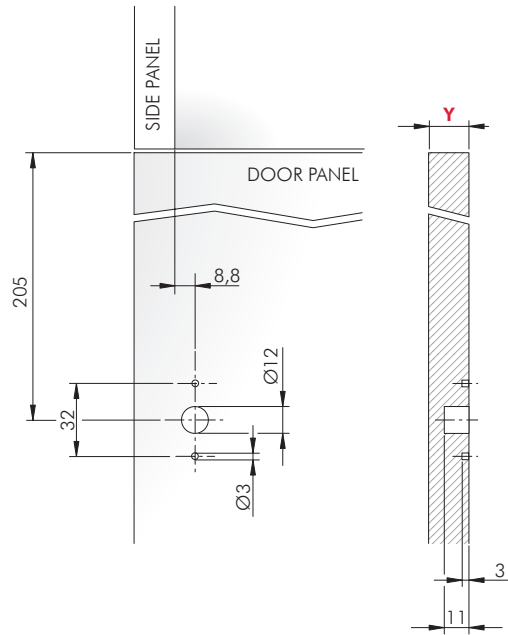
These are experimental results to be checked by the customer.

In accordance with the actual European regulation, we suggest to use two LINK mechanisms for each door. In case the door weight/dimensions are bigger than those reported on the chart, three or more LINK mechanisms might be used. Our technical department is at your disposal to test further cases out of this chart.

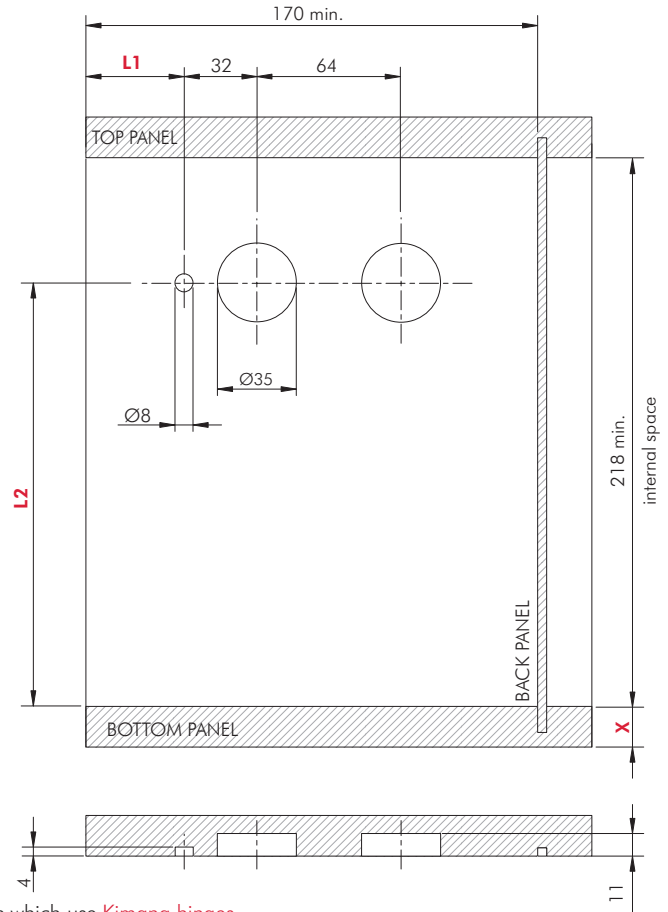
LINK WITH KIMANA HINGE



DOOR PANEL DRILLING PLAN

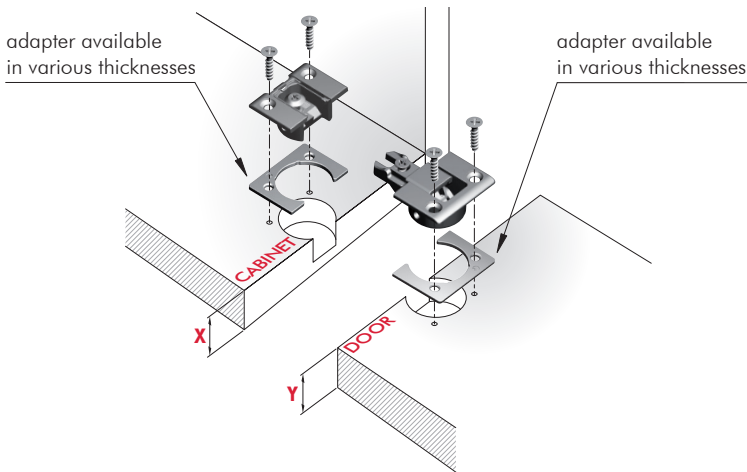


SIDE PANEL DRILLING PLAN

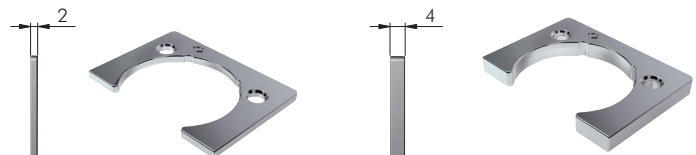


The dimensions of the above drilling plan refer to carcasses which use **Kimana hinges**.

8



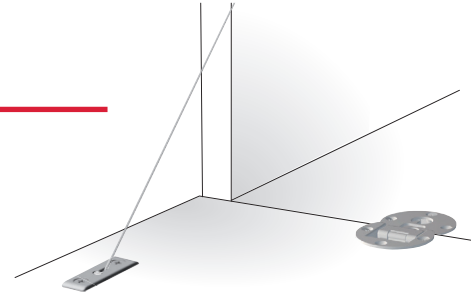
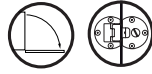
X +	Y +	L1	L2
16 + 4	16 + 2	43	190
16 + 4	19	44	190
18 + 2	18	44	189
18 + 2	19	44	189
19	16 + 2	42	187
19	19	43	187
20	20	43	187



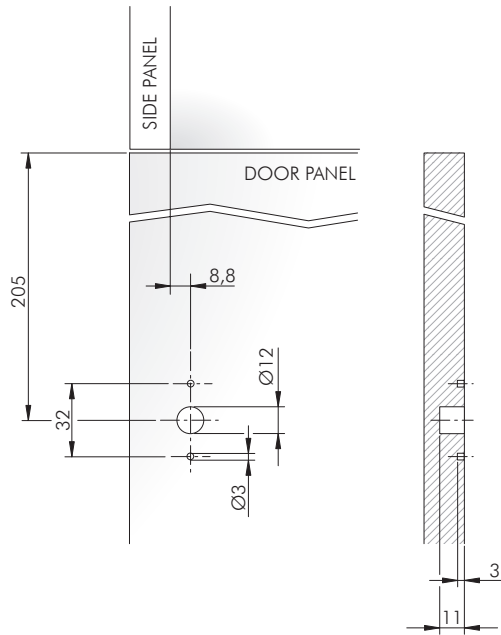
For Kimana and adapter details refer to section "HINGES".



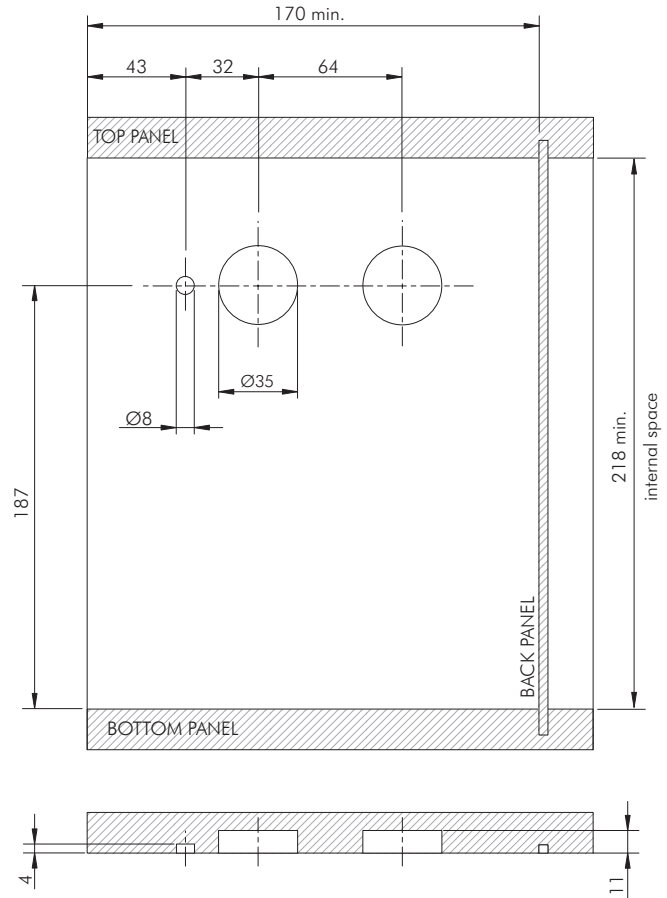
LINK WITH FLAP HINGES



DOOR PANEL DRILLING PLAN



SIDE PANEL DRILLING PLAN



The dimensions of the drilling plan refer to carcasses which use flap hinges.

LINK WITH STANDARD UNSPRUNG HINGES



In case other hinges than KIMANA are used, it is necessary to contact an authorized dealer for a correct drilling scheme. For this purpose, use the form on the Italiana Ferramenta website (product LINK) to provide the required specifications.