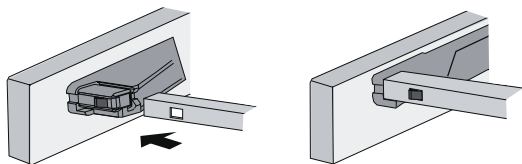
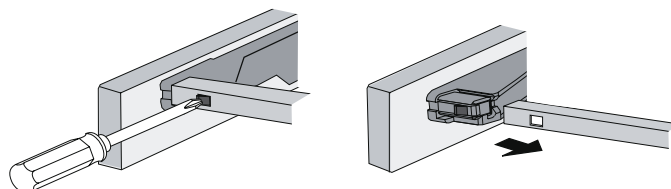


## Montage / Démontage

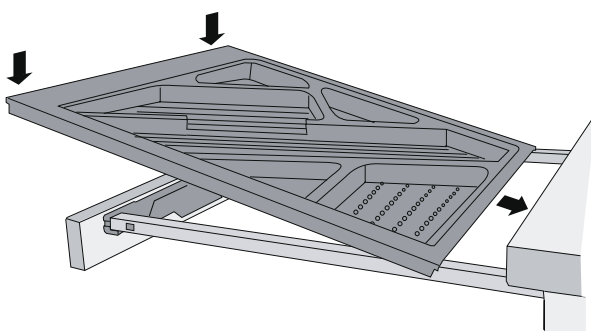
### Montage raccord de façade



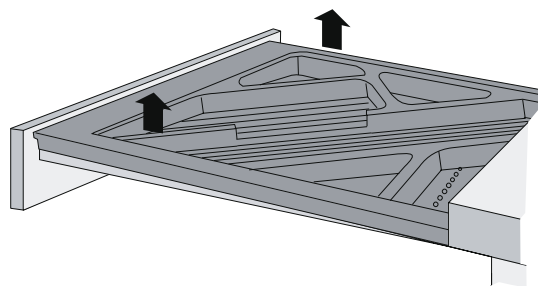
### Démontage raccord de façade



### Montage bac à ustensiles de bureau



### Démontage bac à ustensiles de bureau

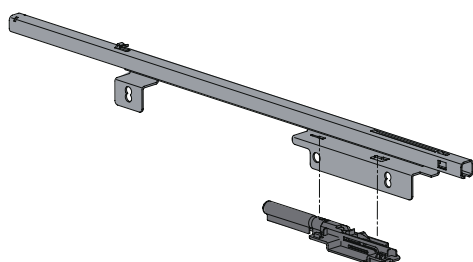


### Attention :

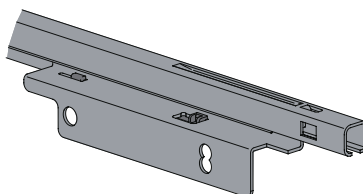
Le bac doit s'engager sous les crochets arrière de la coulisse Quadro 12.

### Montage de boîtier de retour automatique sur Quadro 12

1.



2.



3.

