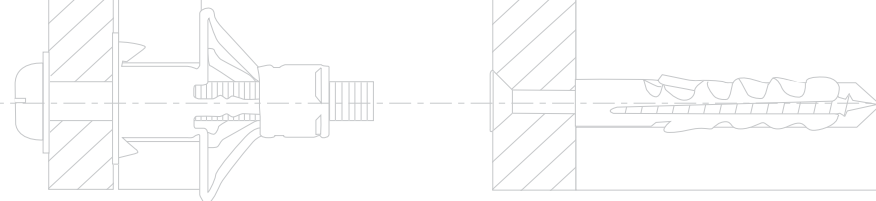


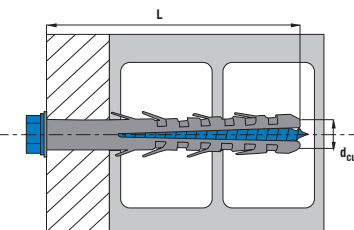


FIXATION LÉGÈRE / LIGHT FIXING



STR CHEVILLE LONGUE EXPANSION / DEEP ANCHORING

 Cheville nylon + tirefond + rondelle / Nylon frame anchor with hex wood screw + washer



Caractéristiques / Features

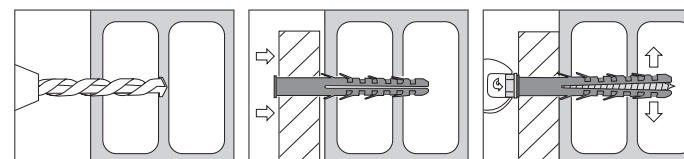
- Spéciale parpaing.
Deep anchoring special hollow concrete.
- Cheville étudiée pour une expansion dans la 2^{ème} alvéole du parpaing.
Special anchor for an expansion in the second part of material.
- Montage traversant.
Drive through application.
- Ancrage profond.
Deep fixing.

Données techniques / Technical data

Ø mm	Ref	L mm	d _{cut} mm
12.0	STR12130*	130	12
	STR12200	200	
12.0	STR12240	240	12
	STR14130	130	
14.0	STR16140	140	14
	STR16160	160	
16.0	STR16200	200	16

Matériaux / Materials


 PARPAING / HOLLOW CONCRETE BLOCK



*Cheville spéciale sabot de charpente.
Special anchor for connector.



SQUARE CHEVILLE À FRAPPER / SQUARE ANCHOR

 Composite de verre et nylon / Glass and nylon fiber

Caractéristiques / Features

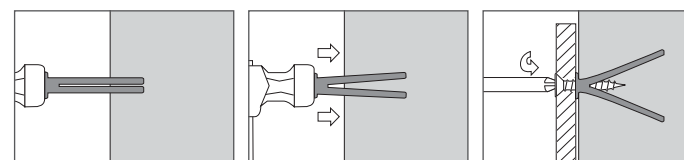
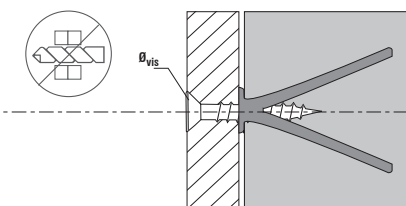
- Très bonne résistance dans le béton cellulaire.
Very good resistance in the gas concrete.
- Sans perçage préalable.
No drilling necessary.
- Se pose par simple frappe.
Is posed with a hammer.
- Accepte les vis à bois de diamètre 3,5 à 6mm.
Can be used with screws for wood diameter 3.5 to 6mm.

Données techniques / Technical data

Ref	L mm	Ø _{vis} mm
SQUARE	65	3.5-6.0

Matériaux / Materials

 BÉTON CELLULAIRE / CELLULAR CONCRETE



L
Longueur
Length

d_{cut}
Diamètre perçage
Drill hole diameter

Ø_{vis}
Diamètre de vis
Diameter of screw

