



EU-TYPE EXAMINATION CERTIFICATE



The following model of Personal Protective Equipment has been subjected to an EU-type examination in accordance with the module B of the PPE regulation (2016/425) and has been shown to satisfy to essential health and safety requirements.

Certificate N° 0075/3370/161/03/20/0857 EXT 01/03/20

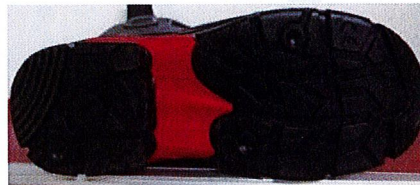
Issued by CTC, Notified Body N°0075, to the following model of personal protective equipment :

Manufacturer : **FOXTER**
2 RUE DU MARECHAL LECLERC 59115, LEERS
FRANCE

Description

PPE Type : *a safety footwear*
Product reference : ICELAND 90027
Article code :
Construction and material of outsole : Injection, PU/PU SOLE.

Pictures :



ICELAND 90027

CE Size : 42
EN ISO 20345:2011
S3 SRC

2 Rue Du Marechal Leclerc
59115 - Leers/France

MONTH/YEAR : 08/2019

Reference standard : EN ISO 20345 : 2011

Classification : I

Category : S3 SRC

Size range : 37-48

Slip resistance : SRC

Toecap nature : Non Metallic

Insert nature : Non Metallic

At the date of certificate the product is in compliance with Annex XVII of REACH regulation (n° 1907/2006 and revisions)

Full description of the PPE, reference rules verified in the context of the EU-type examination and information given on the product are detailed in the manufacturer's technical file index 01 dated from MARCH 2020

NOTA : Any modification to new items of the personal protective equipment object of this EU type approval certificate or any modification of the information contained in the manufacturer technical file which served for the deliverance of the EU type approval certificate (change of address, change of company status) should be brought to the attention of the notified body in accordance with Annex V §7.2 of Regulation 2016/425. Any marking on the PPE which is not concerned by the Regulation (UE) 2016/425, is not covered by this certificate.

Issued in Lyon by

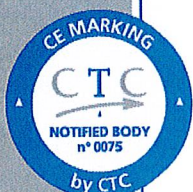
Didier GUISADO

Certification and Quality Manager



Date of first issue : 19 March 2020

End of validity date : 19 March 2025



In application of the Regulation 2016/425 of the European parliament and the Council of 9th March 2016 related to Personal Protective Equipment and repealing the Directive 89/686/EEC.



Accreditation n° 5-0594
Scope available on:
www.cofrac.fr

www.ctcgroupe.com

cemarking@ctcgroupe.com

CTC - 4, rue Hermann Frenkel - 69367 Lyon cedex 07 - France
Tél. : +33 (0)4 72 76 10 10 - Fax : +33 (0)4 72 76 10 00 - ctclyon@ctcgroupe.com

Comité Professionnel de Développement Économique (CPDE) Cuir Chaussure Maroquinerie Ganterie
Loi 78-654 du 22.06.1978 - Siret 77564972600160 - Code NAF 9412Z - TVA FR 88775649726