



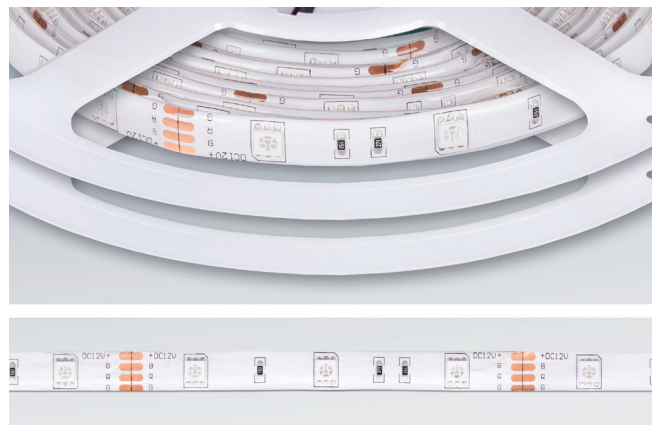
BOBINA 7,2W/m IP65 RGB

LED 12V - 36W (5m x 7,2W/m)

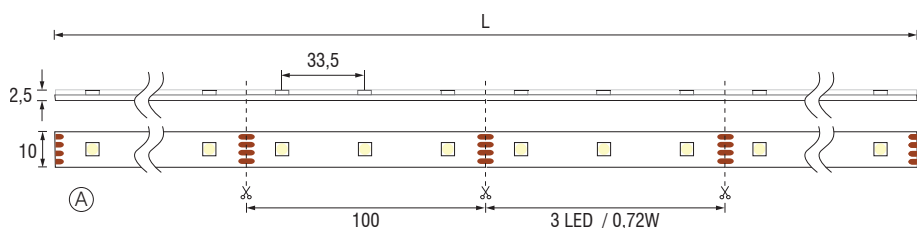
IT Bobina LED adesiva - Sezionabile; si consiglia l'applicazione su materiali ad alta conduzione termica (es. alluminio). Radiocomando con pulsante multifunzione a 9 modalità diverse; centralina RGB (possibile sincronizzazione con 4 radiocomandi).

EN Adhesive LED Reel - Cuttable; application on high heat conductivity (ex. aluminium) materials is recommended; remote control with multifunction pushbutton with 9 different modes; RGB control unit (max. 4 different control devices synchronization).

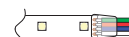
DE Selbsklebendes LED-Band - Kuerzbar; Anwendung mit waermeleitfaehigen Werkstoffen (z.B. Aluminium) wird empfohlen; Fernsteuerung, Taster Multifunktion mit 9 verschiedenen Funktionen; Relaisstation (Mögliche Synchronisierung von max. 4 Fernsteuerung).



35 lm/W PHOTOBIOLOGICAL CLASS 0
CE ENEC EMC

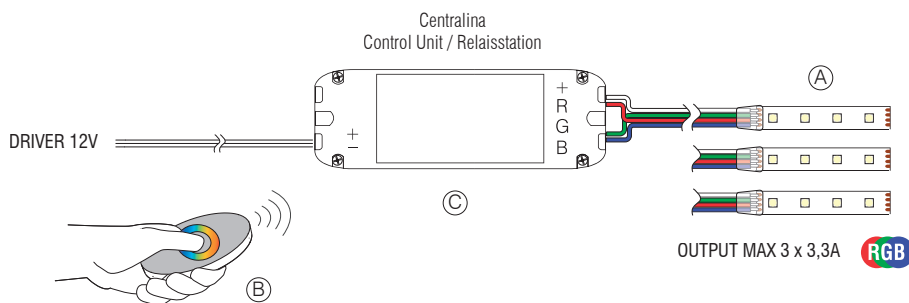


CONNECTION SYSTEM



Saldatura / Welding / Loeten

Ripristinare la classe di protezione originaria in prossimità dei tagli
 It is necessary to maintain the protection class
 Die ursprüngliche Schutzklasse wiederherzustellen

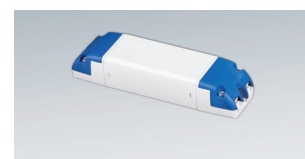


Telecomando RGB / RGB Remote control / RGB Fernsteuerung

ON/OFF - DIMMER - RGB CONTROL - ► / ||
 3 x AAA Batteries (not included)



(B) Telecomando Remote control - Fernsteuerung






(C) Unità di controllo Control unit / Relaisstation

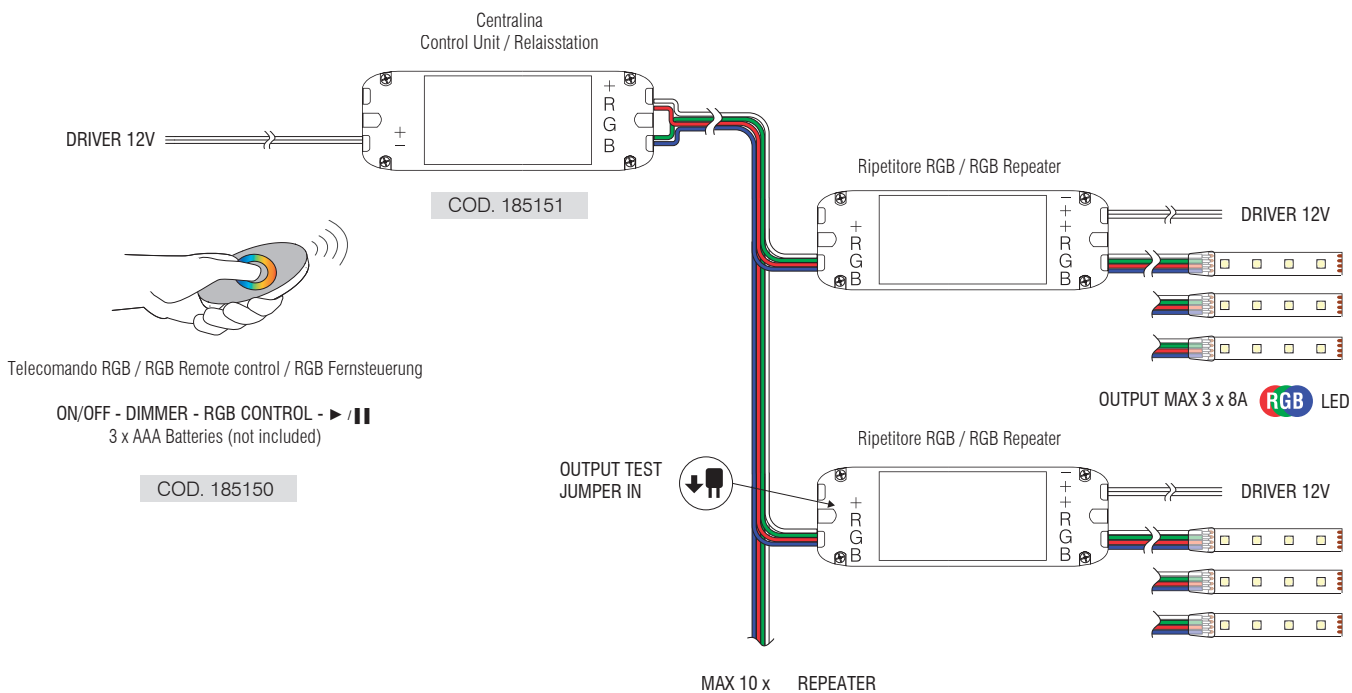
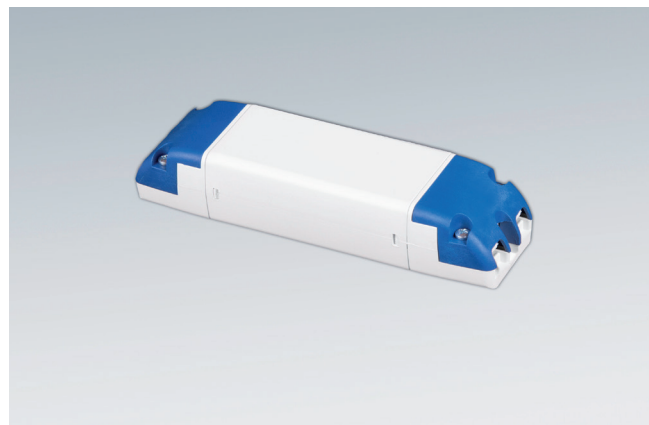
	L	LED No.	V	Codice Part no. - Artikel-Nr.	EEC	Imballo - Packaging - Verpackung		
						Pcs	Kg	mm
(A)	5000	150	12V	5L519RGB	A	1	0,220	15 x 210 x 235
(B)	Frequenza Frequency - Frequenz		Codice Part no. - Artikel-Nr.					
	433Mhz		185150					
(C)	Carico applicabile Max Wattage - Wattleistung		V	Codice Part no. - Artikel-Nr.				
	120W max		12V	185151				

Dimensioni in millimetri (mm) / Dimensions in Millimeters (mm) / Dimensionen in Millimetern (mm)
 Alimentatore non incluso / Driver not included / LED-Konverter nicht inbegriffen

RIPETITORE

IN 12V

-  **Amplificatore - Ripetitore RGB** - Ripete il segnale RGB in ingresso e comanda il carico di uscita.
-  **RGB Booster-Repeater** - It repeats the input RGB or dimming signal and controls the output load.
-  **RGB Booster-Repeater** - Wiederholt das Eingangssignal RGB oder Dimmer und steuert einen neuen Ausgangslast.



Carico applicabile Max Wattage - Wattleistung	V	Codice Part no. - Artikel-Nr.
288W max	12V	185152

Dimensioni in millimetri (mm) / Dimensions in Millimeters (mm) / Dimensionen in Millimetern (mm)
Alimentatore non incluso / Driver not included / LED-Konverter nicht inbegriffen